

# The Short Isoform of the CEACAM1 Receptor in Intestinal T Cells Regulates Mucosal Immunity and Homeostasis via Tfh Cell Induction

Lanfen Chen,<sup>1,11</sup> Zhangguo Chen,<sup>1,11</sup> Kristi Baker,<sup>1</sup> Elizabeth M. Halvorsen,<sup>2</sup> Andre Pires da Cunha,<sup>3</sup> Magdalena B. Flak,<sup>1</sup> Georg Gerber,<sup>4</sup> Yu-Hwa Huang,<sup>1</sup> Shuhei Hosomi,<sup>1</sup> Janelle C. Arthur,<sup>6</sup> Ken J. Dery,<sup>7</sup> Takashi Nagaishi,<sup>8</sup> Nicole Beauchemin,<sup>9</sup> Kathryn V. Holmes,<sup>10</sup> Joshua W.K. Ho,<sup>5</sup> John E. Shively,<sup>7</sup> Christian Jobin,<sup>6</sup> Andrew B. Onderdonk,<sup>4</sup> Lynn Bry,<sup>4</sup> Howard L. Weiner,<sup>3</sup> Darren E. Higgins,<sup>2</sup> and Richard S. Blumberg<sup>1,\*</sup>

<sup>1</sup>Gastroenterology Division, Department of Medicine, Brigham and Women's Hospital

<sup>2</sup>Department of Microbiology and Immunobiology

<sup>3</sup>Center for Neurologic Diseases, Brigham and Women's Hospital

<sup>4</sup>Department of Pathology, Brigham and Women's Hospital

<sup>5</sup>Division of Genetics, Department of Medicine, Brigham and Women's Hospital  
Harvard Medical School, Boston, MA 02115, USA

<sup>6</sup>Center for Gastrointestinal Biology and Disease, University of North Carolina at Chapel Hill, Chapel Hill, NC 27599, USA

<sup>7</sup>Department of Immunology, Beckman Research Institute of City of Hope, Duarte, CA 91010, USA

<sup>8</sup>Department of Gastroenterology and Hepatology, Graduate School of Medical Science, Tokyo Medical and Dental University, Tokyo, 113-8519 Japan

<sup>9</sup>Goodman Cancer Research Centre, McGill University, Montreal, Quebec H3G 1Y6, Canada

<sup>10</sup>Department of Microbiology, University of Colorado School of Medicine, Aurora, CO 80045, USA

<sup>11</sup>These authors contributed equally to the work

\*Correspondence: [rblumberg@partners.org](mailto:rblumberg@partners.org)

<http://dx.doi.org/10.1016/j.immuni.2012.07.016>

## SUMMARY

Carcinoembryonic antigen cell adhesion molecule like I (CEACAM1) is expressed on activated T cells and signals through either a long (L) cytoplasmic tail containing immune receptor tyrosine based inhibitory motifs, which provide inhibitory function, or a short (S) cytoplasmic tail with an unknown role. Previous studies on peripheral T cells show that CEACAM1-L isoforms predominate with little to no detectable CEACAM1-S isoforms in mouse and human. We show here that this was not the case in tissue resident T cells of intestines and gut associated lymphoid tissues, which demonstrated predominant expression of CEACAM1-S isoforms relative to CEACAM1-L isoforms in human and mouse. This tissue resident predominance of CEACAM1-S expression was determined by the intestinal environment where it served a stimulatory function leading to the regulation of T cell subsets associated with the generation of secretory IgA immunity, the regulation of mucosal commensalism, and defense of the barrier against enteropathogens.

## INTRODUCTION

Carcinoembryonic antigen cell adhesion molecule 1 (CEACAM1), a member of the carcinoembryonic antigen family, is engaged in intercellular binding interactions that affect signal transduction

by a number of cell surface receptors. CEACAM1 is constitutively expressed by a variety of cell types, including those of endothelial, epithelial, and hematopoietic origin such as B cells, polymorphonuclear leukocytes, monocytes, and dendritic cells. In addition, CEACAM1 is expressed at minimal quantities in circulating natural killer (NK) and T cells but is upregulated in these cell types following a variety of different forms of activation (Azuz-Lieberman et al., 2005; Boulton and Gray-Owen, 2002; Coutelier et al., 1994; Nakajima et al., 2002; Singer et al., 2002). On the cell surface, CEACAM1 can associate with and modify the function of numerous signaling receptors that are dictated by the CEACAM1 isoforms expressed. The individual CEACAM1 isoforms are generated by alternative splicing and consist of transmembrane proteins that possess a characteristic membrane distal, immunoglobulin V (IgV)-like domain (the N domain), which functions in homophilic binding but differs with respect to the number of membrane proximal extracellular IgC2-like domains and the length of their cytoplasmic tail (Gray-Owen and Blumberg, 2006). Specifically, the 11 human and 4 mouse CEACAM1 splice variants encode either a short (S) cytoplasmic tail about which little is known or a long (L) cytoplasmic tail containing immune receptor tyrosine-based inhibitory motifs (ITIM). In the latter case, consistent with the presence of ITIM motifs in their cytoplasmic tail, the CEACAM1-L isoforms of mice and humans are linked to inhibition of many different signaling receptors (Chen et al., 2001 and 2008; Kammerer et al., 1998; Pan and Shively, 2010). In each example, the inhibitory function of CEACAM1-L isoforms is triggered by the phosphorylation of the ITIM tyrosine residues by receptor tyrosine kinases or Src-related kinases, resulting in recruitment of the Src homology 2 (SH2) domain-containing protein-tyrosine phosphatases (SHP)-1 or -2 (Huber et al., 1999; Nagaishi et al., 2006).

Thus, CEACAM1-L-mediated recruitment of these phosphatases results in the dephosphorylation of critical tyrosines contained within activating motifs associated with a variety of cell surface receptors such as the B cell receptor, epidermal growth factor receptor and T cell receptor (TCR)-CD3 complex (Abou-Rjaily et al., 2004; Boulton and Gray-Owen, 2002; Chen et al., 2008; Lobo et al., 2009). As such, CEACAM1-L isoforms are functionally inhibitory and are the major isoforms described in mouse and human lymphocytes including NK cells, B cells, and T cells.

CEACAM1-L and CEACAM1-S isoforms are expressed at varying ratios in different cell types with recent evidence showing that such expression is under the influence of cytokines (e.g., interferon- $\gamma$ ), transcription factors (e.g., IRF-1), and splicing regulators (e.g., members of the heterogeneous nuclear ribonucleoprotein family) (Dery et al., 2011; Gencheva et al., 2010). Although not directly demonstrated, this is presumed to be the case for T lymphocytes as well. It is known that although mouse and human T cells predominantly express CEACAM1-L isoforms, there is some evidence that CEACAM1-S isoforms can be expressed. However, this is a controversial issue because little or no detection has been described depending upon the study (Donda et al., 2000; Singer et al., 2002). This is not an inconsequential issue, because *in vitro* transfection studies in T cells suggest that CEACAM1 is a “tunable” receptor system given that CEACAM1-S isoforms may possess costimulatory function that is capable of ameliorating the inhibitory signals provided by CEACAM1-L isoforms in the context of TCR-CD3 complex signaling when expressed together (Chen and Shively, 2004a; Chen et al., 2008). However, there is no information available on CEACAM1 isoform regulation in T cells *in vivo* and the physiologic function(s) that this might confer.

To this end, we have focused our attention on the regulation of CEACAM1 isoform expression and function within intestinal tissues in order to shed light on the normal physiologic roles of CEACAM1 in these compartments. We have done so given the fact that CEACAM1 can function as a microbial receptor and the gastrointestinal surface is in direct contact with large concentrations of commensal and pathogenic microbes (Kuespert et al., 2006). In addition, CEACAM1 expression is increased on the cell surface of T cells in human diseases such as Celiac disease and inflammatory bowel disease (Donda et al., 2000; Morales et al., 1999). Furthermore, *in vivo* ligation of CEACAM1 with CEACAM1 homophilic ligands as provided by N-domain-Fc-fusion proteins or forced expression of CEACAM1-L isoforms in T cells is able to prevent or block mucosal inflammation associated with either hapten-mediated colitis or naive T cell transfer models of colitis (Iijima et al., 2004; Nagaishi et al., 2006). Together, these studies predict an important physiological role for CEACAM1 in mucosal tissues of the gastrointestinal tract.

In this study, we have identified a key role for CEACAM1 in regulating steady-state secretory immunity in the intestines. By establishing a PCR method for quantifying mouse CEACAM1-S and CEACAM1-L variants, we found that T cells within the intestines, relative to peripheral tissues such as the spleen, not only exhibited increased overall CEACAM1 expression but also uniquely possessed a relative overabundance of CEACAM1-S relative to CEACAM1-L isoforms. Moreover, in this environment, we showed that CEACAM1-S isoforms have special physiological functions, which at a cellular level enhanced T cell activation

independently of CEACAM1-L isoforms and were preferentially expressed in cells performing common mucosal immune functions. Specifically, we found that CEACAM1-S acts as an individual signaling unit, which promotes the induction of CD4<sup>+</sup>LAP<sup>+</sup> regulatory T (Treg) cells, CD4<sup>+</sup>PD1<sup>+</sup>CXCR5<sup>+</sup> follicular helper T cells (Tfh cells), and the development of IgA committed B cells within Peyer's patches (PP). Consistent with this, T cell-associated CEACAM1-S isoforms led to enhanced mucosal IgA secretion, which influenced both the composition of commensal microbiota and host defense against exposure to pathogens such as *Listeria monocytogenes*. In the absence of CEACAM1 expression, these barrier-protective functions were diminished. Together, these studies provide tissue-specific evidence for CEACAM1 isoform regulation linked to important physiological functions within the intestines.

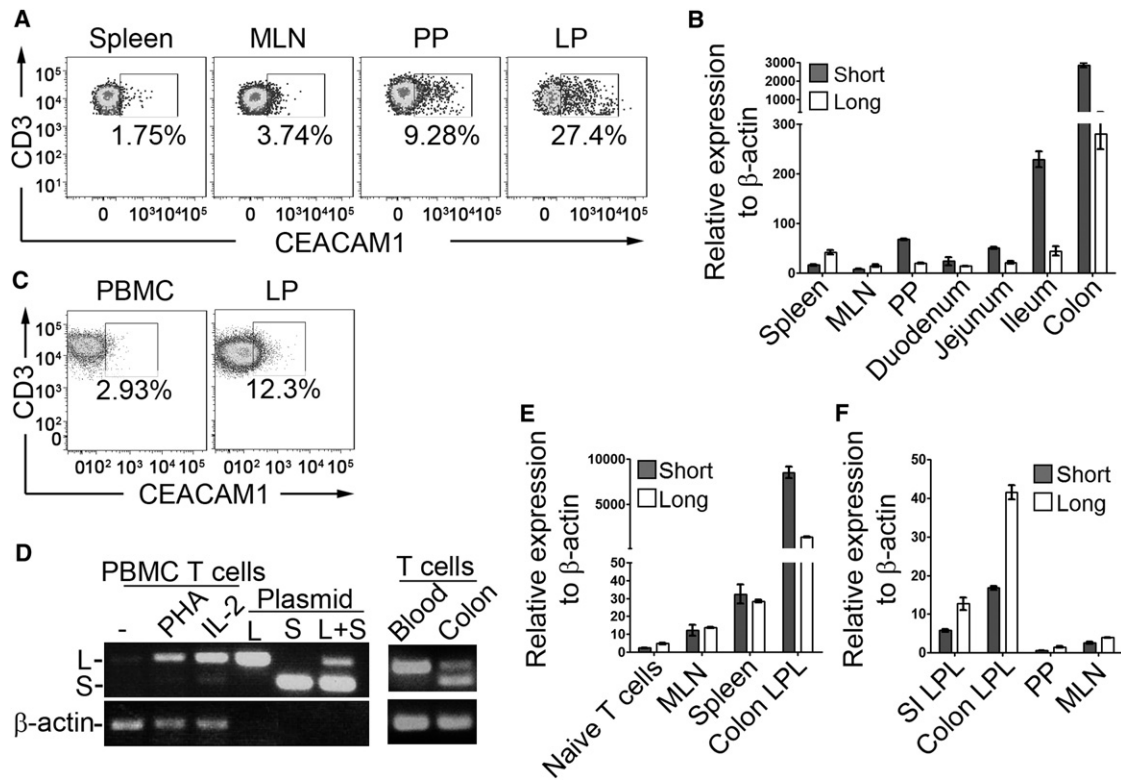
## RESULTS

### Intestinal T Cells Predominantly Express CEACAM1-S Isoforms while Extraintestinal T Cells Mainly Express CEACAM1-L

The expression of CEACAM1 isoforms in hematopoietic cells has not been systematically examined outside peripheral sites such as the spleen and blood. We therefore compared CEACAM1 expression on mouse splenic T cells to the quantities expressed on T cells from intestinal tissues under homeostatic conditions. Interestingly, the proportion of T cells that stained positive for CEACAM1 was increased on T cells obtained from colonic lamina propria (LP) and PP in comparison to that observed on T cells isolated from either spleen or mesenteric lymph nodes (MLN) as defined by staining with the CC1 monoclonal antibody (mAb), a mouse anti-mouse CEACAM1 antibody (Dveksler et al., 1993) (Figure 1A). These studies showed that T cells within intestinal mucosal tissues displayed substantially greater CEACAM1 amounts on the cell surface under steady-state conditions in comparison to those within nonmucosal sites.

We next assessed the relative expression of CEACAM1 isoforms, and to do so we first established a quantitative assay for analyzing expression of mouse CEACAM1-L and -S variants because currently available antibodies are not able to distinguish between these two general classes of CEACAM1 in a quantitative fashion. Two pairs of real-time PCR primers were designed to specifically quantify these in mouse T cells. The specificity and efficiency of these primers was verified using mouse (m) CEACAM1-4L (4L) and CEACAM1-4S (4S) plasmids (see Figure S1A available online). Quantitative PCR (qPCR) analysis of mouse primary CD3<sup>+</sup> T cells isolated from spleen and lymph nodes (LN) demonstrated that CEACAM1-L isoforms predominated in resting peripheral T cells with increased expression upon anti-CD3 stimulation as previously described (Boulton and Gray-Owen, 2002; Nakajima et al., 2002) (Figure S1B). In addition, although CEACAM1-S isoforms were detected, CEACAM1-L isoforms predominated in peripheral T cells such that the CEACAM1-L:CEACAM1-S (L:S) ratio was  $1.95 \pm 0.34$ , consistent with previous studies (Singer et al., 2002).

Having validated this qPCR assay with splenic T cells, we performed a broad survey of CEACAM1 isoform expression in primary T cells isolated from several different tissues. It was noted that, unlike CD3<sup>+</sup> T cells isolated from spleen or MLN wherein



**Figure 1. Intestinal T Cells Predominantly Express CEACAM1-S Isoforms**

(A) Cell surface expression of CEACAM1 (CC1 antibody) on CD3<sup>+</sup> T cells from spleen, MLN, PP, or lamina propria (LP) of colon from C57BL/6 mice. (B) qPCR for transcriptional analysis of CEACAM1-L and -S in CD3<sup>+</sup> T cells isolated from spleen, MLN, blood, PP, or segments of small intestine and colon LP from WT mice. (C) Cell surface expression of CEACAM1 (5F4 antibody) on CD3<sup>+</sup> T cells from human peripheral blood (PBMC) or colon LP. (D) Semiquantification of the relative transcription of CEACAM1-L and CEACAM1-S in human CD3<sup>+</sup> T cells isolated from peripheral blood with indicated treatment or from fresh colon LP. (E) qPCR for quantification of CEACAM1-L and CEACAM1-S transcription in naive CD3<sup>+</sup> T cells from WT mice, MLN T cells from WT mice, and CD3<sup>+</sup> T cells isolated from spleen and colon LP of *Rag2*<sup>-/-</sup> mice adoptively transferred with WT CD4<sup>+</sup> naive T cells. (F) T cells isolated from mouse LP were expanded with ConA and IL-2 in vitro for 2 weeks and the expression of CEACAM1-L and CEACAM1-S were determined by qPCR.

CEACAM1 expression was low and CEACAM1-L isoforms predominated over CEACAM1-S isoforms, CD3<sup>+</sup> T cells from the intestinal LP of the duodenum, jejunum, ileum, and colon, and PP were observed to express an overall increase in CEACAM1 transcript abundance with significantly greater quantities of CEACAM1-S isoforms relative to CEACAM1-L isoforms. Thus, an average L:S ratio of <1.0 (PP, 0.53 ± 0.08; small intestine, 0.36 ± 0.11; and colon, 0.19 ± 0.04) was observed, which was reversed from peripheral T cells (Figure 1B). Accordingly, it was noted that the quantity and L:S ratio of CEACAM1 expression varied cephalocaudally along the axis of the gut. Specifically, the amounts of CEACAM1 and L:S ratio were more similar to spleen, MLN, and peripheral blood in the proximal intestines. Furthermore, CEACAM1 expression increased and the L:S ratio progressively decreased from the distal small intestine (ileum) to the colon. As a result, LP T cells of the PP and colon contained the highest amount of CEACAM1 and the lowest L:S ratios relative to all other compartments examined (Figure 1B). This was verified by immunoblotting with the CC1 mAb, further confirming that T cells isolated from PP and colonic LP expressed higher

CEACAM1 amounts relative to peripheral blood and especially CEACAM1-S isoforms, which was most notable in the colonic LP (Figure S1C). These studies both confirmed the increased expression of CEACAM1 within intestinal T cells and further indicated that CEACAM1-S isoforms were not only expressed by primary T cells but established that they were, surprisingly, the major isoform within intestinal T cells.

Given these observations, we also determined whether CEACAM1-S isoforms predominated in T cells obtained from the LP of human colon. In a first group of studies, we confirmed that, in comparison to peripheral T cells, a greater proportion of T cells from the human colon expressed CEACAM1 on the cell surface as we had previously observed in mouse (Figure 1C; Figure S1D). Moreover, using previously published RT-PCR primers, which amplify a 160 bp fragment from all CEACAM1-S cDNAs and a 210 bp fragment from all CEACAM1-L cDNAs from human CEACAM1 (Chen et al., 2008; Singer et al., 2002), we confirmed that CEACAM1 was barely detectable in resting peripheral blood T cells (Figure 1D). However, after activation with either phytohemagglutinin (PHA) or interleukin-2 (IL-2),

CEACAM1 was induced and CEACAM1-L isoforms became the dominant type detected (Figure 1D, left panel). In contrast to these observations with peripheral blood T cells and similar to the findings obtained with intestinal T cells from mice, CD3<sup>+</sup> T cells from the LP of human colon exhibited readily detectable CEACAM1 at baseline with markedly elevated quantities of CEACAM1-S relative to CEACAM1-L when compared to that observed in CD3<sup>+</sup> T cells from peripheral blood (Figure 1D, right panel).

#### Preferential Expression of CEACAM1-S over CEACAM1-L Isoforms Requires Continuous Exposure to Mucosa-Associated Factors

Together, these studies demonstrated that intestinal T cells from both mouse and human uniquely expressed CEACAM1-S isoforms in particularly high quantities. In addition, this dominance of CEACAM1-S expression by intestinal T cells was not simply due to T cell activation because activation of peripheral blood T cells did not induce significant quantities of CEACAM1-S (Figure S1B) nor were significant quantities of CEACAM1-S detectable in T cells from the spleen or peripheral blood (Figures 1B and 1D). Given this, we hypothesized that CEACAM1 expression and especially that of CEACAM1-S isoforms in T cells was regulated by signals encountered within the intestinal microenvironment. We therefore addressed this question by adoptively transferring spleen-derived, naive CD4<sup>+</sup>CD62L<sup>+</sup> T cells from wild-type (WT) mice that expressed little detectable CEACAM1 expression by flow cytometry (data not shown) but with low amounts of predominantly CEACAM1-L transcripts as shown by qPCR into *Rag2*<sup>-/-</sup> mice and analyzed CEACAM1 isoform expression in the adoptively transferred T cells after 2 weeks, prior to the development of intestinal inflammation (Figure 1E). These studies showed that, whereas T cells isolated from the MLN and spleens of the *Rag2*<sup>-/-</sup> recipients expressed low-to-moderate amounts of CEACAM1 expression with an L:S ratio of approximately 1.0, the T cells that homed to the LP of the colon expressed substantially increased CEACAM1 with an L:S ratio of approximately 0.1–0.2, consistent with a significant dominance of CEACAM1-S isoforms. Thus, peripheral T cells entering the intestines expressed not only increased quantities of CEACAM1 but also a marked dominance of CEACAM1-S isoforms.

We also questioned whether these effects by intestinal milieu were imprinted and thus irreversible. To do so, we examined the expression of CEACAM1-S isoforms associated with CD3<sup>+</sup> T cells obtained from colonic LP before and after two weeks of ex vivo culture with concanavalin-A and IL-2. These studies showed that dominant expression of CEACAM1-S isoforms was lost under such conditions (Figure 1F) and demonstrated that the L:S ratio observed within intestinal tissues is determined by, and requires continuous exposure to, the relevant mucosal factors. Considering that CEACAM1-S expression predominated in colon LP T cells from germ-free Swiss Webster and C57BL/6 mice (Figures S1E and S1F), *Myd88*<sup>-/-</sup> (Figure S1G), and *Nod2*<sup>-/-</sup> (Figure S1H) mice, the factors responsible for this phenotype were neither dependent upon the presence of commensal microbiota nor microbial-induced signaling.

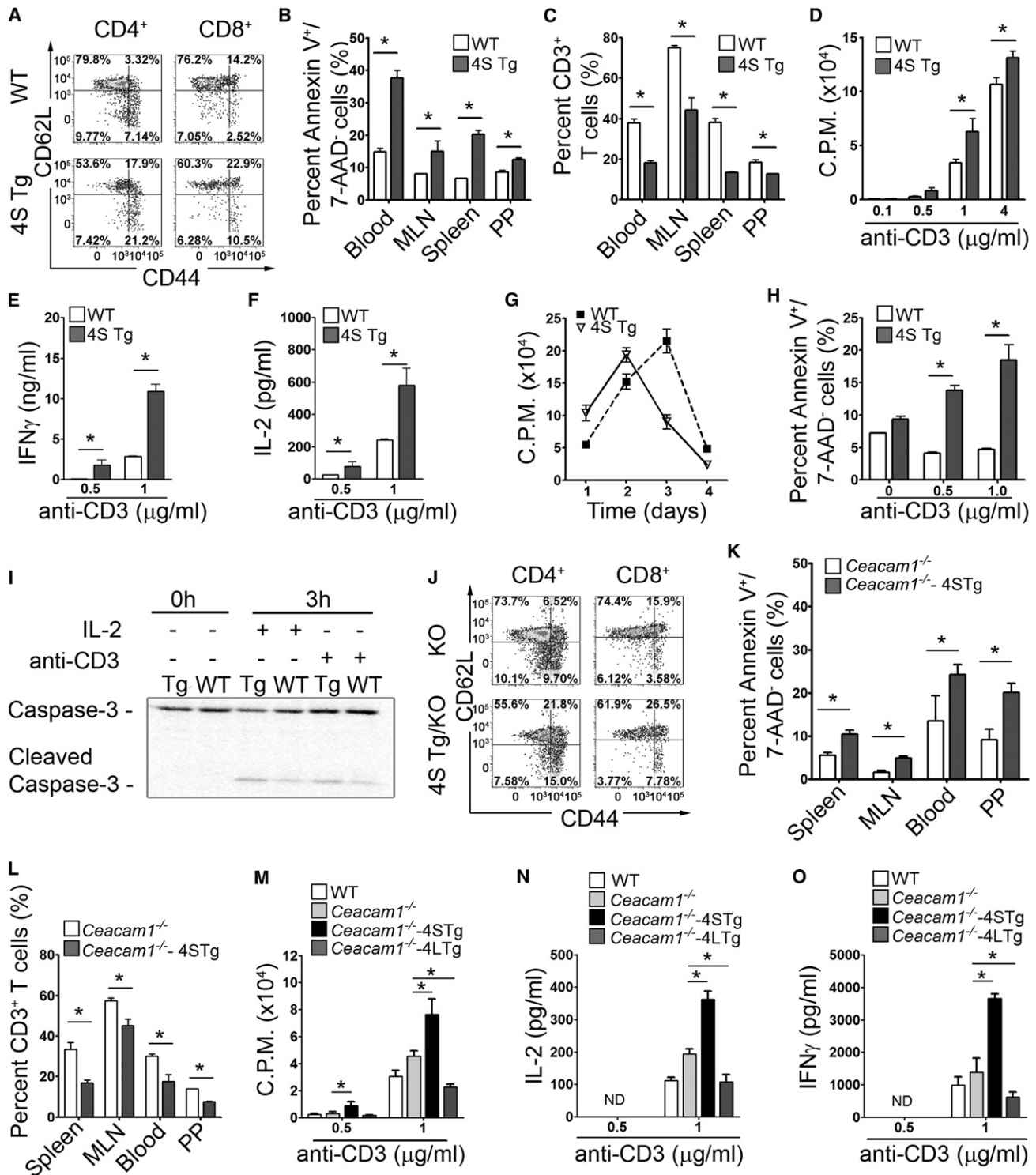
The alternative splicing of CEACAM1 depends upon regulatory *cis*-acting elements within exon 7 and flanking introns (Dery et al., 2011). Recently, the *trans*-acting auxiliary splicing factors heterogeneous nuclear ribonucleoprotein (hnRNP) L, hnRNP A1, and

hnRNP M variants were shown to associate with exon 7 of the CEACAM1 messenger RNA (mRNA) and control splice-site recognition motifs giving rise to CEACAM1-L or CEACAM1-S isoforms. Specifically, whereas hnRNP A1 or hnRNP L promote CEACAM1-S isoform processing, hnRNP M fosters the generation of CEACAM1-L isoforms (Dery et al., 2011). We therefore examined whether the preferential expression of CEACAM1-S isoforms observed in the intestinal T cells correlated with the appropriate profile of hnRNP expression as determined by qPCR. Indeed, the expression of hnRNP A1 (Figure S1I) was higher and the expression hnRNP M (Figure S1J) lower in T cells from PP in comparison to that observed in spleen and MLN. As such, the hnRNP A1:hnRNP M ratio gradually increased in T cells isolated from spleen, MLN, and PP consistent with the increased amounts of CEACAM1-S relative to CEACAM1-L in the intestine-associated tissues (Figure S1K). Together, these studies indicated that the tissue-associated microenvironment of the intestine was uniquely promoting CEACAM1 splicing which resulted in predominant CEACAM1-S expression.

#### CEACAM1-4S Functions as an Independent Signaling Unit in the Induction of T Cell Activation

Although CEACAM1-L isoform expression in T cells is well known to provide important negative regulation of TCR-CD3 complex function after ITIM phosphorylation by the *src*-related kinase, p56<sup>lck</sup>, and recruitment of SHP1 resulting in dephosphorylation of CD3- $\zeta$  and ZAP70 (Chen et al., 2008; Lee et al., 2008), very little is known about CEACAM1-S function in general or in T cells in particular. Results in T cells are limited to transfected in vitro model systems and remain controversial with both stimulatory and inhibitory functions assigned to CEACAM1-S splice variants (Chen and Shively, 2004a; Chen et al., 2004b). Given the impossibility of generating a mouse specifically lacking the CEACAM1-S splice variant without also deleting the alternative CEACAM1-L variant, we generated CEACAM1-4S (4S) transgenic (Tg) mice, overexpressing the mouse 4S isoform specifically in T cells under the human CD2 (hCD2) promoter in order to explore the function of CEACAM1-S isoforms in T cells in vivo. The overexpression of 4S in T cells was confirmed by flow cytometry using the CC1 mAb. These studies confirmed that the T cells in the 4S Tg mice uniformly expressed increased CEACAM1 (Figure S2A) with a predominance of CEACAM1-S isoforms (Figure S2B).

When examined by flow cytometry, 4S Tg mice exhibited greater quantities of activated CD4<sup>+</sup> and CD8<sup>+</sup> T cells as shown by lower percentages of CD62L<sup>hi</sup>CD44<sup>lo</sup> naive T cells, and a higher percentage of CD62L<sup>lo</sup>CD44<sup>hi</sup> or CD62L<sup>hi</sup>CD44<sup>hi</sup> cells consistent with effector memory and potentially central memory T cells (Seder and Ahmed, 2003) respectively, in spleen (Figure 2A), MLN, PP, and colon LP (Figure S2C). We also noted that 4S Tg mice exhibited increased numbers of apoptotic CD3<sup>+</sup> T cells (annexin V<sup>+</sup>7-AAD<sup>-</sup>CD3<sup>+</sup> cells) within the peripheral blood, spleen, MLN, and PP (Figure 2B), which correlated inversely with decreased quantities of CD3<sup>+</sup> cells (Figure 2C). In spite of this, total PP and MLN cell counts were found to be very similar between WT and CEACAM1-4S Tg mice (Figure S2D) indicating that overexpression of CEACAM1-4S was selectively depleting T cells. Intracellular cytokine staining of the CD4<sup>+</sup> T cells isolated from spleen, MLN, and PP also revealed that



**Figure 2. CEACAM1-4S Is Associated with Activation of Primary T Cells**

(A) Spleen cells were first gated on CD3<sup>+</sup> cells, and either CD4<sup>+</sup> or CD8<sup>+</sup> cells, and later examined for CD44 and CD62L expression. 4S Tg mice possessed lower percentages of CD62L<sup>hi</sup>CD44<sup>low</sup> naive T cells and higher percentages of CD62L<sup>low</sup>CD44<sup>hi</sup> effector memory T cells when compared to WT mice. (B and C) Compared to WT littermates, 4S Tg mice exhibited higher percentages of CD3<sup>+</sup> Annexin V<sup>+</sup>/7AAD<sup>+</sup> apoptotic cells (B) and lower percentages of CD3<sup>+</sup> T cells (C) in various tissues (n = 5 mice per group). (D–H) CD3<sup>+</sup> T cells isolated from the spleen of 4S Tg mice and their WT littermates were cultured with anti-CD3 antibody at indicated concentrations, or 1 μg/ml anti-CD3 over the indicated time course (G). Proliferation assays were performed by [<sup>3</sup>H]-thymidine incorporation (D and G); IFN-γ (E) and IL-2 (F) production was measured by ELISA; and apoptosis was determined using annexin-V and 7-AAD staining (H) (n = 5 mice per group).

IL-2, IL-4, IL-10, IL-17, IFN- $\gamma$ , and TGF- $\beta$  were all increased in the T cells of 4S Tg mice when compared to that observed in WT littermates (Figure S2E). As illustrated in Figure S2F for IFN- $\gamma$ , CEACAM1-S induction of cytokines influenced the total CD4<sup>+</sup> T cell population consistent with a broad activating function of the 4S isoform when highly expressed. CD3<sup>+</sup> T cells isolated from the spleen of 4S Tg mice also exhibited a higher proliferation rate (Figure 2D) and more IFN- $\gamma$  (Figure 2E) and IL-2 (Figure 2F) secretion upon anti-CD3 stimulation *ex vivo* in comparison to that associated with T cells from WT littermate controls. However, with longer time-periods of culture, the proliferation rate of splenic CD3<sup>+</sup> T cells from the 4S Tg mice was observed to be lower than that detected with the WT littermates after stimulation, consistent with *in vitro* T cell contraction due to increased activation-induced cell death (AICD) in the presence of the 4S isoform (Figure 2G). Consistent with this, splenic 4S Tg T cells exhibited increased annexin V staining (Figure 2H) and cleavage of caspase 3 (Figure 2I) after 3 hr of anti-CD3 stimulation. These results showed that the mouse 4S isoform both costimulated primary T cells and sensitized them to AICD, supporting previous *in vitro* transfection studies, which ascribe activating functions to this CEACAM1 isoform in contrast to the inhibitory functions of the L isoform (Chen and Shively, 2004a; Chen et al., 2004b). Moreover, these observations further supported the idea that both the increased total CEACAM1 expression and the enrichment of the activating S isoform observed on T cells in intestinal tissues are associated with the effector memory T cell phenotype, which predominates in the normal intestinal LP under steady-state conditions (Hurst et al., 1999).

### The Activating Function of CEACAM1-4S in T Cells Is Observed Independently of CEACAM1-L Isoform Expression

Because the studies we performed in 4S Tg mice were undertaken in the context of endogenous CEACAM1 expression, it was possible that the apparent activating and inhibiting functions of the 4S isoform were either the consequence of CEACAM1-mediated neutralization of CEACAM1-L inhibitory function and/or the result of a direct activating signal by CEACAM1-S. To examine this question, we generated 4S Tg mice that lacked expression of any other CEACAM1 isoforms by crossing 4S Tg mice with *Ceacam1*<sup>-/-</sup> mice on a C57BL/6 background (*Ceacam1*<sup>-/-</sup>-4S Tg). Although less than that observed in 4S Tg T cells containing endogenous amounts of CEACAM1 in all cell types, *Ceacam1*<sup>-/-</sup>-4S Tg mice still contained more activated T cells *in vivo* as revealed by lower percentages of CD4<sup>+</sup> (or CD8<sup>+</sup>) CD62L<sup>hi</sup>CD44<sup>lo</sup> naive T cells, and higher percentages of CD4<sup>+</sup> (or CD8<sup>+</sup>) CD62L<sup>lo</sup>CD44<sup>hi</sup> effector memory T cells in spleen (Figure 2J), MLN, PP, and colon LP (Figure S2G) in comparison to *Ceacam1*<sup>-/-</sup> littermates. *Ceacam1*<sup>-/-</sup>-4S Tg mice also exhibited

more apoptotic CD3<sup>+</sup> T cells within the MLN, blood, and PP (Figure 2K), inversely correlating with a decrease in CD3<sup>+</sup> cells (Figure 2L). CD4<sup>+</sup> T cells isolated from the spleens of *Ceacam1*<sup>-/-</sup>-4S Tg mice also proliferated more vigorously (Figure 2M) and secreted more IL-2 (Figure 2N) and IFN- $\gamma$  (Figure 2O) upon anti-CD3 stimulation. Notably, splenic CD4<sup>+</sup> T cells from *Ceacam1*<sup>-/-</sup> mice exhibited increased activation upon anti-CD3 stimulation that was intermediate to the anti-CD3 induced stimulation observed with WT and *Ceacam1*<sup>-/-</sup>-4S Tg T cells (Figures 2M–2O). On the other hand, splenic T cells from mice in which only the CEACAM1-4L (4L) isoform was expressed by T cells, generated by crossing previously established 4L Tg mice (Nagaishi et al., 2006) with *Ceacam1*<sup>-/-</sup> mice, exhibited a blunted response to anti-CD3 stimulation that was less than that observed with WT T cells and is consistent with the inhibitory functions of this isoform (Figures 2M–2O). Taken together, these studies showed that loss of dominant endogenous CEACAM1-L inhibitory function in *Ceacam1*<sup>-/-</sup> mice or gain of CEACAM1-S expression independently of CEACAM1-L isoforms, as observed in *Ceacam1*<sup>-/-</sup>-4S Tg T cells, resulted in enhanced TCR-CD3 complex signaling. In comparison, gain of CEACAM1-L isoforms independently of CEACAM1-S isoforms led to inhibition of T cell function. Thus CEACAM1-S and CEACAM1-L were able to function as independent activating and inhibitory signaling units in T cells. Moreover, the blunted effects of CEACAM1 overexpression on T cells *in vivo* in the absence of CEACAM1 expression elsewhere (Figures 2J–2L) not only highlights the importance of homophilic interactions presumably *in trans* with CEACAM1 on non-T cells but also suggests a possible role for other heterophilic ligands in CEACAM1 activation.

### CEACAM1-4S Isoform Function Is Associated with NFAT Signaling

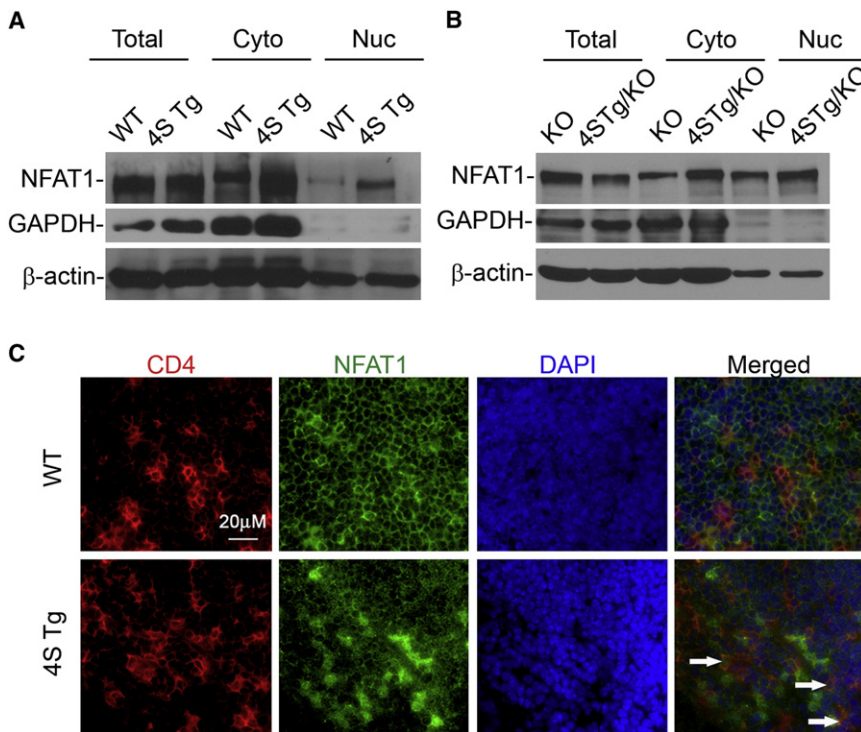
The studies described above suggested that CEACAM1-S isoforms possess direct signaling functions in T cells. However, the mechanisms by which this might occur are unknown. To clarify the possible signaling pathways involved in the functions observed as a consequence of CEACAM1-4S expression on primary T cells, we performed Affymetrix cDNA microarray analysis on primary CD4<sup>+</sup> T cells isolated from MLN of WT or 4S Tg mice and compared their transcriptional profiles. By doing so, we identified an elevation of a number of genes associated with the Ca<sup>2+</sup>- nuclear factor of activation (NFAT) signaling pathway (Hermann-Kleiter and Baier, 2010) (Table S1). These included cytokines such as IFN- $\gamma$ , IL-2, and IL-4 and cell surface proteins such as CD40L.

We therefore assessed NFAT expression and its intracellular distribution in primary CD4<sup>+</sup> T cells from the MLN of WT, 4S Tg, *Ceacam1*<sup>-/-</sup>, and *Ceacam1*<sup>-/-</sup>-4S Tg mice. The most important finding was that CD4<sup>+</sup> T cells from 4S Tg or *Ceacam1*<sup>-/-</sup>-4S

(I) CD3<sup>+</sup> T cells were isolated from the spleen of 4S Tg or WT mice, and cultured with IL-2 (100 U/ml) or anti-CD3 (1  $\mu$ g/ml) coated plates. Cell lysates were prepared at the indicated times, and caspase-3 and its activated form were determined using immunoblot.

(J–L) Compared to *Ceacam1*<sup>-/-</sup> mice, *Ceacam1*<sup>-/-</sup>-4S Tg mice have lower percentages of CD62L<sup>hi</sup>CD44<sup>low</sup> naive T cells and higher percentages of CD62L<sup>low</sup>CD44<sup>hi</sup> effector memory T cells in the spleen (J), higher percentages of annexin V<sup>+</sup>/7AAD<sup>+</sup> apoptotic cells (K) and lower percentages of CD3<sup>+</sup> T cells (L) (n = 5 mice per group).

(M–O) T cells isolated from spleen of WT, *Ceacam1*<sup>-/-</sup>, *Ceacam1*<sup>-/-</sup>-4S Tg (4S Tg/KO), or *Ceacam1*<sup>-/-</sup>-4L Tg (4L Tg/KO) mice were cultured with anti-CD3 at the indicated concentrations and proliferation assays were performed by [<sup>3</sup>H]-thymidine incorporation (M). IL-2 (N) and IFN- $\gamma$  (O) production were measured by ELISA (n = 4 mice per group). All data are mean  $\pm$  SEM; \*p < 0.05 (two-tailed Student's t test), ND = not detected.



**Figure 3. Overexpression of CEACAM1-4S on T Cells Enhances the Nuclear Translocation of NFAT1**

(A and B) Immunoblot of whole cell lysates (Total), cytosolic (Cyto), and nuclear (Nuc) extracts of splenic CD4<sup>+</sup> T cells isolated from (A) WT and 4S Tg or (B) *Ceacam1*<sup>-/-</sup> and *Ceacam1*<sup>-/-</sup>-4S Tg (4S Tg/KO) mice with anti-NFAT1, anti-GAPDH, or β-actin antibodies.

(C) Frozen sections of PP from WT or 4S Tg animals were stained with anti-CD4 (red), anti-NFAT1 (green), and DAPI (blue). Areas of overlap are indicated by white arrows. Data are representative of three pairs of animals.

Tg mice exhibited an obvious increase in the quantities of intranuclear NFAT relative to the amounts observed in the T cells from their WT or *Ceacam1*<sup>-/-</sup> littermate controls, respectively, as defined by immunoblotting with an NFAT1-specific antibody in the setting of similar amounts of intranuclear β-actin (Figures 3A and 3B). These biochemical studies were confirmed by the morphological examination of tissues from 4S Tg mice (Figure 3C), which revealed increased intranuclear accumulation of NFAT in CD4<sup>+</sup> T cells within the PP of 4S Tg mice in comparison to that observed in the PP of WT littermate controls (Figure 3C). These studies confirmed the activating function of the 4S isoform and suggest that CEACAM1-S-mediated activation of T cells involves NFAT.

**CEACAM1-4S on T Cells Regulates Peyer’s Patches and the Generation of IgA-Dependent Secretory Immunity**

Given the relative importance observed for CEACAM1-S isoforms in T cells within intestinal tissues, including their enrichment in the S isoform and increased expression of NFAT-dependent factors such as CD40L, we next sought to determine whether the functions associated with CEACAM1-S-mediated signaling were linked to normal physiologic operations within the intestines. We first observed that, despite being present in equal numbers (Figure 4A), PP of 4S Tg small intestine were considerably larger in size than those of their WT counterparts (Figure 4B). Using a previously published scoring system, which takes into account both PP frequency and size (Barreau et al., 2007), we determined that the total surface area occupied by PP of 4S Tg small intestine was substantially greater than that associated with their WT counterparts (Figure 4C). Because similar observations were made when *Ceacam1*<sup>-/-</sup>-4S Tg mice were compared to *Ceacam1*<sup>-/-</sup> littermate controls (Figure 4D), these

observations provided evidence that enlarged PP size was a direct consequence of CEACAM1-S function. We therefore next examined B cell development in the PP of WT and 4S Tg mice. As shown in Figure 4E (and Table S2), we detected increased B220<sup>+</sup>IgA<sup>+</sup> cells resembling activated plasma cells by flow cytometry in the PP and LP of 4S Tg mice relative to WT littermate controls. Consistent with this, the proportion of B220<sup>+</sup>IgA<sup>+</sup> cells was decreased in the PP of *Ceacam1*<sup>-/-</sup> mice relative to their WT littermate controls (Figure 4F; data not shown). Using immunofluorescence microscopy, we confirmed the specific localization of these plasma cells in the PP of WT and 4S Tg mice (Figure 4G). In contrast, no differences were seen in the frequency of B220<sup>+</sup>IgA<sup>+</sup> cells in either the PP or LP of WT and 4S Tg mice (Table S2). These studies showed that the PP of 4S Tg exhibited an increase in activated, IgA-committed plasma cells and that *Ceacam1*<sup>-/-</sup> mice demonstrated a corollary decrease in such cells, thereby confirming the physiological requirement for CEACAM1-S in establishing an adequate plasma cell distribution in the intestine.

We then examined the functional consequences of CEACAM1-4S in T cells on gut B cells by studying the immunoglobulin content of the intestinal secretions from 4S Tg and *Ceacam1*<sup>-/-</sup> mice. These studies revealed that the quantity of secreted IgA correlated with CEACAM1-4S expression in that luminal IgA, but not IgG, was increased in 4S Tg mice and decreased in *Ceacam1*<sup>-/-</sup> mice relative to WT littermate controls (Figure 4H). Although there were no significant differences in the serum IgA concentration observed in WT and *Ceacam1*<sup>-/-</sup> animals, there was a slight trend toward an increase in serum IgA, but not IgG concentrations, in 4S Tg mice compared to WT littermate controls (Figure 4I). Together, these data revealed that CEACAM1-S leads to increases in both the quantity and activity of IgA<sup>+</sup> plasma cells in intestinal tissues, enlarging the size of PP and enhancing secretory immunity.

**CEACAM1 Regulates Mucosal Defense to Oral *Listeria monocytogenes* Infection**

We next determined whether the physiological role of CEACAM1 in regulating PP-mediated secretory immunity through CEACAM1-S expression extended to defense against a mucosal

pathogen. In this regard, we chose to study *Listeria monocytogenes*, a Gram-positive intracellular pathogen, because previous studies indicate that *Ceacam1*<sup>-/-</sup> mice are susceptible to an intraperitoneal challenge with *L. monocytogenes* (Pan and Shively, 2010) and secretory immunity is likely to play an important role in immune defense against this bacterial pathogen (Manohar et al., 2001). We therefore examined the responses of *Ceacam1*<sup>-/-</sup> mice, 4S Tg mice, and their WT littermates to oral infection with *L. monocytogenes*. Seventy-two hr after induction of infection, the bacterial burden in both *Ceacam1*<sup>-/-</sup> small intestine and liver were substantially higher than that in WT and 4S Tg mice. Specifically, a 1,000-fold increase in colony forming units (cfu) of *L. monocytogenes* was detected in the small intestine of *Ceacam1*<sup>-/-</sup> mice and a 100-fold increase in cfu of *L. monocytogenes* was observed in the liver of *Ceacam1*<sup>-/-</sup> mice compared to WT or 4S Tg mice, whereas no statistically significant difference was observed in the spleen for any group (Figure 4J). Conversely, the number of *L. monocytogenes* recovered from the small intestine, liver, and spleen of 4S Tg mice was decreased relative to that observed in WT mice (Figure 4J). It is also notable that the quantity of secretory IgA detected in the small intestinal secretions of 4S Tg mice challenged with *L. monocytogenes* was greatly increased relative to that observed in WT mice (Figure 4K). Consistent with this observation, the unrestrained *L. monocytogenes* infection identified in *Ceacam1*<sup>-/-</sup> mice was associated with decreased secretion of intestinal IgA and increased IgA concentration in the serum of *Ceacam1*<sup>-/-</sup> mice in response to infection (Figure 4K). These data demonstrated that CEACAM1, and particularly CEACAM1-S, is necessary for an optimal response to mucosal challenge with a bacterial pathogen and that this is mediated through CEACAM1-dependent regulation of intestinal IgA secretion.

#### Overexpression or Loss of CEACAM1-S on T Cells Alters the Composition of the Commensal Microbiota

The studies above showed that a normal physiologic function of CEACAM1 in mucosal tissues is promoting secretory immunity in the PP and that this process is capable of enhancing protection against intestinal pathogens. Because IgA is a major regulator of the commensal microbiota (Macpherson et al., 2001), we hypothesized that forced expression of CEACAM1-S on T cells, as observed in 4S Tg mice, or loss of CEACAM1 expression, as observed in *Ceacam1*<sup>-/-</sup> mice, and which lead to increased and decreased IgA concentrations in the secretions, respectively, might result in demonstrable changes in the composition of the commensal microbiota in the ileum, the predominant site of the anatomic changes observed.

We therefore used quantitative culture methods to assess the composition of the commensal microbiota in the ileum from groups of age, gender, and strain matched WT, 4S Tg, and *Ceacam1*<sup>-/-</sup> mice. Culture of full-thickness bowel and of luminal contents is used as a means for evaluation of predominant species found in the gut and provides a normalized assessment of microbial biomass relative to the input mass of full thickness segments of terminal ileum (Bjørneklett et al., 1983). Culture-based studies are also leveraged to identify individual species and communities of bacteria that play an essential role in eliciting host phenotypes (Baumgart et al., 2007). Using aerobic

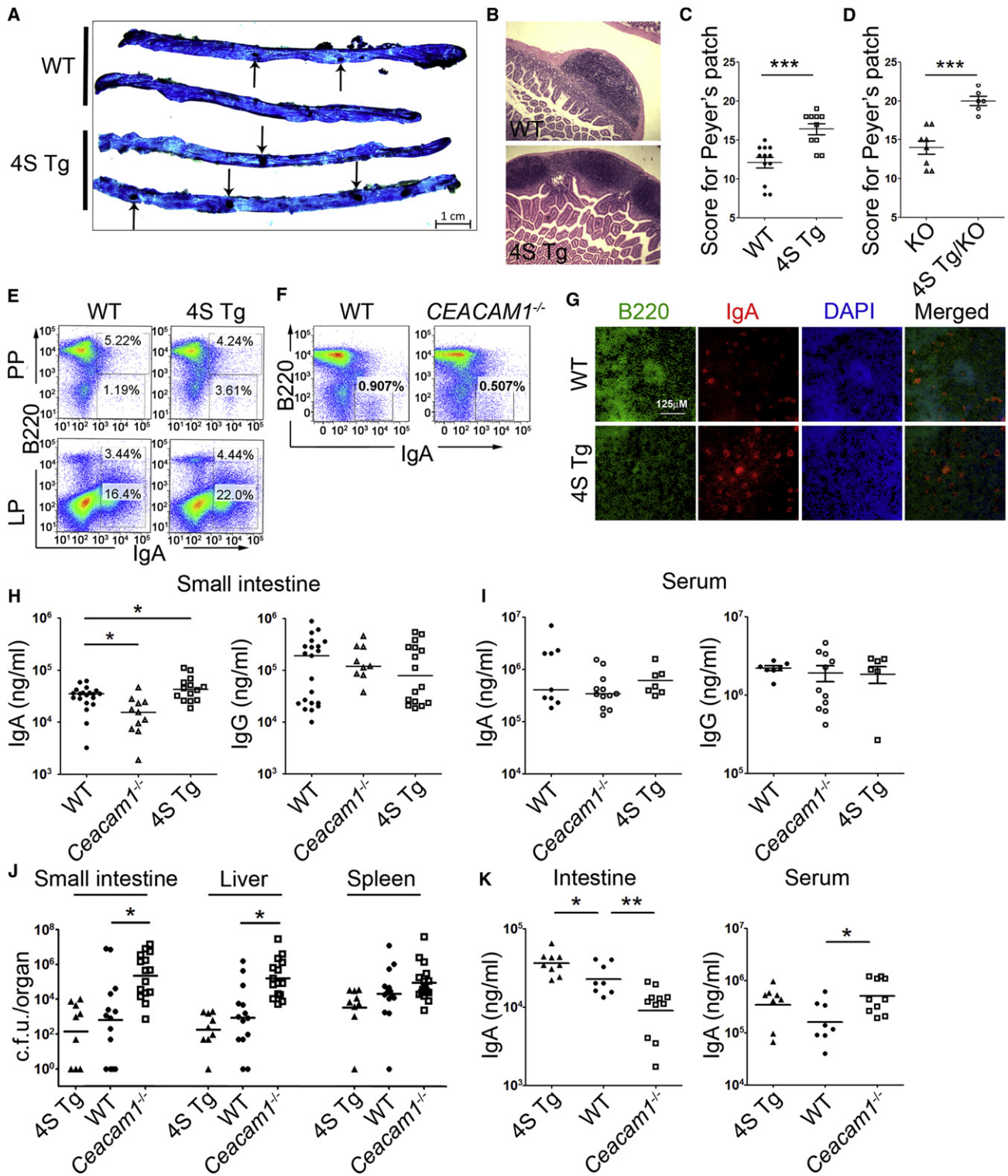
and anaerobic culture techniques and selective and differential media, as described in Supplemental Information, we recovered nine distinct isolates from the ileum of 4S Tg and WT mice (Table 1; Table S3). These isolates spanned three orders, Lactobacillales, Bacillales and Bacteroidales, with 55% of isolates belonging to the genus *Lactobacillus*. The microbial diversity of the samples from 4S Tg mice was significantly higher than that of littermate WT controls, as assessed by multiple ecological measures of diversity (Table 1; Table S3). In addition, certain isolates were substantially more abundant in the 4S Tg mice as compared to WT controls, including *Gemella morbillorum*, *Lactobacillus murinus*, and *Lactobacillus acidophilus*. For *Ceacam1*<sup>-/-</sup> mice, we recovered ten distinct isolates spanning five orders, including those found in 4S Tg mice, and additionally the orders Clostridiales and Bifidobacteriales (Table 1; Table S3). Microbial diversity of the samples from *Ceacam1*<sup>-/-</sup> mice was also considerably higher than that of controls, but only one isolate, *Lactobacillus brevis*, was found to be more abundant in *Ceacam1*<sup>-/-</sup> mice (Table 1). These studies showed that, as would be predicted by the observed increased and decreased IgA secretion (Fagarasan, 2008; Macpherson and Uhr, 2004) in 4S Tg and *Ceacam1*<sup>-/-</sup> mice, respectively, the composition of the commensal microbiota is regulated by CEACAM1.

#### CEACAM1 Is Preferentially Expressed on Specific Subsets of Circulating and Tissue-Resident CD4<sup>+</sup> T Cells

Given our observations concerning the impact of CEACAM1 on the regulation of secretory IgA and its consequences in T cell-targeted 4S Tg mice as well as the known importance of T cells to B cell development, we sought to define the subsets of CEACAM1-regulated T cells responsible for these activities. To do so, we focused our attention on defining the accessory molecules expressed by the small subset of CEACAM1<sup>+</sup> T cells detected under physiologic conditions in spleen and MLN and which were increased in frequency in PP and LP in WT mice (see Figure 1A). We observed that CD4<sup>+</sup>CEACAM1<sup>+</sup> T cells from the blood, MLN, PP, and LP expressed higher amounts of both CD44 and CD62L than did CD4<sup>+</sup>CEACAM1<sup>-</sup> T cells (Figure 5A; Figures S3A–S3C). This is consistent with CEACAM1 being associated with effector and/or central memory T cells. Additionally, we noted that CD4<sup>+</sup>CEACAM1<sup>+</sup> T cells from each of these tissue compartments expressed more  $\alpha 4\beta 7$ -integrin than their CD4<sup>+</sup>CEACAM1<sup>-</sup> counterparts, suggesting that CEACAM1 expression on T cells, even those within the peripheral immune system, is associated with enhanced potential to home to intestinal tissues. We also noted that CEACAM1 positivity was associated with preferential expression of PD-1, LAP (TGF $\beta$  latency associated peptide), and B220, all of which are characteristics associated with T cell subsets possessing regulatory or accessory potential in the production of IgA (Fagarasan et al., 2001; Good-Jacobson et al., 2010; Ochi et al., 2006; Oida et al., 2003).

These observations led us to next focus on specific cell subsets on which the identified molecules are known to be enriched. In particular, because our data showed CEACAM1 expression to be strongly cosegregating with surface LAP on CD4<sup>+</sup> T cells from naive WT animals (Figure 5A; Figures S3A–S3C), we carefully examined CD4<sup>+</sup>CD25<sup>-</sup>LAP<sup>+</sup> T cells, a subset of Treg that are





**Figure 4. CEACAM1 Regulates Secretory Immunity and Mucosal Defense against Oral *L. monocytogenes* Infection**  
 (A) Representative methylene blue staining of the small intestine used to accurately quantify PP numbers. PPs are indicated by black arrows. One representative picture from each group of three is shown.  
 (B) Hematoxylin and eosin staining shows 4S Tg mice have enlarged PP compared to that of WT mice. One representative picture from each group of eight is shown.  
 (C and D) 4S Tg mice and *Ceacam1*<sup>-/-</sup>-4S Tg (4S Tg/KO) mice have significantly increased numbers and size of PP when compared to that of WT or *Ceacam1*<sup>-/-</sup> mice, respectively. \*\*\*p ≤ 0.001 (two-tailed Student's t test) (mean, ± SEM).

**Table 1. Alterations in the Composition of the Commensal Microbiota in Mice with Overexpression of CEACAM1-4S on T Cells**

	log10 cfu/g														Community Diversity	
	Bacteroidales			Lactobacillales											Shannon	Simpson
	<i>P. loescheii</i>	<i>P. tannerae</i>	<i>Prevotella</i> sp.	Bifidobacteriales <i>B. pseudolongum</i>	<i>E. faecalis</i>	<i>L. leichmanii</i>	<i>L. murinus</i>	<i>L. acidophilus</i>	<i>L. brevis</i>	<i>L. curvatus</i>	<i>L. farcimus</i>	<i>L. viridescens</i>	Bacillales <i>G. morbillorum</i>	Clostridiales <i>Eubacterium</i> sp.		
4S Tg	5.8	4.5	-	-	-	6.3	7.0	6.8	-	5.6	-	0	5.3	-	2.1	0.9
	0	3.9	-	-	-	5.7	4.1	4.4	-	3.3	-	0	4.6	-	1.8	0.8
	0	0	-	-	-	0	6.4	6.5	-	6.0	-	5.3	4.2	-	1.4	0.7
	0	0	-	-	-	0	0	6.4	-	0	-	0	5.4	-	1.4	0.8
WT	0	0	-	-	-	0	0	0	-	0	-	3.0	0	-	0.0	0.0
	0	0	-	-	-	0	3.5	3.5	-	0	-	0	0	-	0.7	0.5
	0	0	-	-	-	0	3.0	0	-	0	-	0	0	-	0.0	0.0
	0	0	-	-	-	0	3.6	3.0	-	0	-	0	0	-	0.7	0.5
	0	0	-	-	-	0	0	0	-	0	-	4.6	0	-	0.0	0.0
p value	0.6	0.3	-	-	-	0.3	<b>0.02</b>	<b>0.02</b>	-	0.07	-	0.9	<b>0.02</b>	-	<b>0.02</b>	<b>0.02</b>
CC1 <sup>-/-</sup>	-	-	0	0	4.6	6.8	6.5	6.8	-	6.3	-	0	5.6	1.9	0.9	
			3.0	0	0	0	3.5	3.7	-	0	-	0	0	1.4	0.8	
			3.0	0	3.5	6.9	6.6	6.1	-	0	-	4.3	0	1.4	0.7	
WT			0	6.1	0	7.0	6.9	0	-	3.0	-	0	0	1.1	0.7	
			0	0	0	6.2	6.0	0	-	0	-	0	0	1.1	0.7	
-	-	0	5.3	0	6.7	6.7	0	0	-	0	-	0	0	1.1	0.7	
		0	0	0	7.3	6.8	0	0	-	0	-	0	0	0.7	0.5	
		0	0	0	4.3	4.4	0	0	-	4.6	-	0	0	0.7	0.5	
p value	-	-	0.1	0.4	0.1	0.2	0.3	<b>0.04</b>	-	0.6	-	0.6	0.6	<b>0.04</b>	<b>0.04</b>	

Shannon and Simpson indices are measures of microbial community diversity, with larger values indicating more diverse samples. These indices take into account the abundances of species relative to one another in a sample. Numbers in bold indicate statistically significant differences.

concentrated in intestinal tissues and provide TGF-β-dependent regulatory function and, potentially, support for secretory IgA immunity (Niemir et al., 1995; Ochi et al., 2006; Oida et al., 2003). Whereas on average 43.6% ± 10.9% of CD4<sup>+</sup>CD25<sup>-</sup>LAP<sup>+</sup> T cells within MLN coexpressed CEACAM1, only 2.07% ± 0.8% of CD4<sup>+</sup>CD25<sup>-</sup>LAP<sup>-</sup> cells were also CEACAM1<sup>+</sup> under steady-state conditions in WT mice (Figure 5B). This was in stark contrast to the CEACAM1 expression in another regulatory T cell subset wherein similar low quantities of CEACAM1 were observed on CD4<sup>+</sup>Foxp3<sup>+</sup> and CD4<sup>+</sup>Foxp3<sup>-</sup> Treg cells from the MLN (Figure 5B). We next examined the relative expression of the CEACAM1-L and CEACAM1-S isoforms in CD4<sup>+</sup>CEACAM1<sup>-</sup>LAP<sup>-</sup>, CD4<sup>+</sup>CEACAM1<sup>+</sup>LAP<sup>-</sup>, or CD4<sup>+</sup>CEACAM1<sup>+</sup>

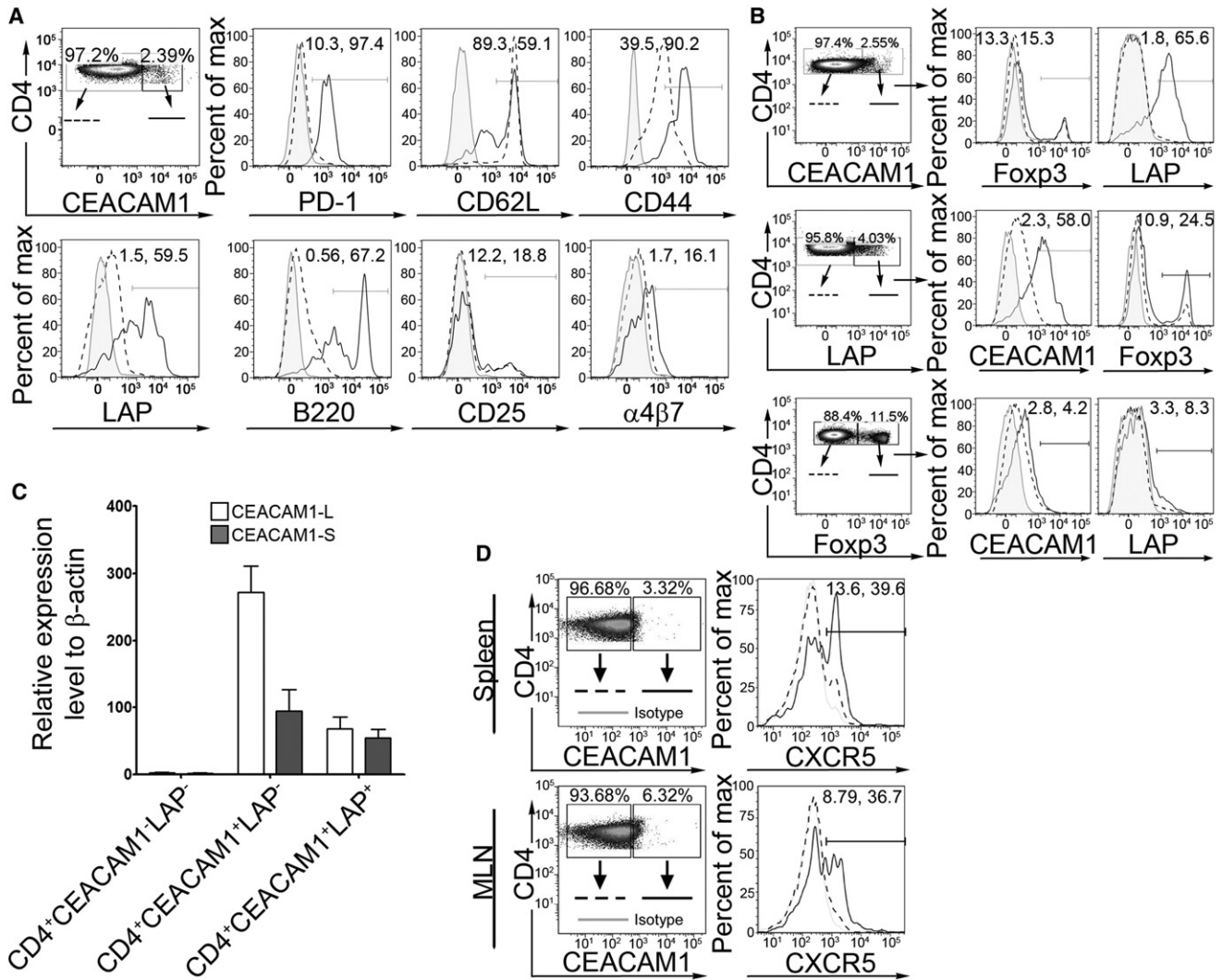
LAP<sup>+</sup> cells flow-cytometrically sorted from pooled spleen and MLN of WT mice using the real-time PCR assay described above (Figures S1A and S1B). Consistent with our findings in the total population of peripheral CD4<sup>+</sup> T cells, the ratio of L:S isoforms was 2.78 ± 0.07 in CD4<sup>+</sup>CEACAM1<sup>+</sup>LAP<sup>-</sup> cells, indicating a predominance of the L isoform in this group of T cells (Figure 5C). In contrast, the L:S ratio was decreased to 1.16 ± 0.27 (p < 0.05) in CD4<sup>+</sup>CEACAM1<sup>+</sup>LAP<sup>+</sup> cells indicating an enrichment of the CEACAM1-S isoform in this regulatory cell subset (Figure 5C). No differences were observed in the L:S ratio between CD4<sup>+</sup>CEACAM1<sup>+</sup>CD25<sup>-</sup> cells (1.52 ± 0.29) and CD4<sup>+</sup>CEACAM1<sup>+</sup>CD25<sup>+</sup> cells (1.52 ± 0.11) isolated from the spleen and LN (Figure S3D). These data demonstrated the existence

(E–G) PP and LP in 4S Tg mice exhibit increased B220<sup>+</sup>IgA<sup>+</sup> plasma blasts as assessed by flow cytometry (E) while PP of *Ceacam1*<sup>-/-</sup> mice possess decreased B220<sup>+</sup>IgA<sup>+</sup> plasma blasts (F). Immunofluorescence confirmation of enrichment of B220<sup>+</sup>IgA<sup>+</sup> in the PP from WT or 4S Tg animals for B220 (green) and IgA (red) (G). Data are representative of three animal pairs.

(H and I) IgA and IgG concentrations were measured using ELISA and compared between WT, *Ceacam1*<sup>-/-</sup>, and 4S Tg littermates in the small intestine (H) and serum (I) (n ≥ 12 per group). \*p < 0.05 (two-tailed Student's t test) (mean, ± SD).

(J) *L. monocytogenes* cfu in the small intestine, liver, and spleen of WT, *Ceacam1*<sup>-/-</sup>, and 4S Tg mice 72 hr after oral infection with *L. monocytogenes* (n ≥ 9 per group). \*p < 0.05 (Mann-Whitney test).

(K) IgA concentrations for intestinal washes or serum isolated from diseased mice, as measured by ELISA. (n ≥ 9 per group). \*p < 0.05; \*\*p < 0.01 (Mann-Whitney t test).



**Figure 5. CEACAM1-4S Is Preferentially Expressed on Specific Subsets of Both Circulating and Intestinal CD4<sup>+</sup> T Cells**  
 (A) Expression of CEACAM1 is associated with the enrichment of specific cell surface molecules. Percentages on histogram gates indicate the frequency of cells positive for the given marker in the CD4<sup>+</sup>CEACAM1<sup>-</sup> and CD4<sup>+</sup>CEACAM1<sup>+</sup> cell populations, respectively, of MLN CD3<sup>+</sup> T cells from WT mice.  
 (B) CEACAM1 expression cosegregates with LAP expression and is unrelated to Fc $\gamma$ R2b expression in CD4<sup>+</sup> T cells from the MLN of naive WT mice.  
 (C) The CEACAM1-S isoform is enriched on CD4<sup>+</sup>CC1<sup>+</sup> T cells which express LAP. T cells were isolated from pooled spleen and LN.  
 (D) CXCR5 is preferentially enriched on CEACAM1-expressing CD4<sup>+</sup> T cells in the spleen and MLN of WT mice. Data are representative of five pairs of animals. (A)–(C) show representative data from three independent experiments with n = 5–6 mice per group.

of a close association between the expression of CEACAM1 and LAP.

The preferential expression of PD-1 noted on CD4<sup>+</sup>CEACAM1<sup>+</sup> T cells further led us to investigate a subset of T cells on which this molecule is enriched. High expression of PD-1 is associated with T follicular helper (Tfh) cells, which regulate the formation of long-lived plasma cells by driving the survival and selection of B cells in mature germinal centers (Good-Jacobson et al., 2010). In addition to PD-1, Tfh cells are identified by high expression of CXCR5 (Linterman et al., 2011) and upon investigation, we observed that CD4<sup>+</sup>CEACAM1<sup>+</sup> T cells from both the spleen and MLN of WT mice are enriched in expression of this chemokine receptor compared to their CD4<sup>+</sup>CEACAM1<sup>-</sup> counterparts (Figure 5D).

Thus, our data indicated that Tfh cells preferentially expressed CEACAM1 under physiological conditions. A deeper investigation of the CEACAM1 isoforms expressed by PD-1<sup>+</sup>CXCR5<sup>+</sup> Tfh cells also revealed an enrichment of CEACAM1-S isoforms in Tfh cells from the spleen, PP, and MLN (Figure S3E). Specifically, in contrast to the majority of peripheral CD4<sup>+</sup> T cells, which predominantly express CEACAM1-L isoforms, Tfh cells expressed near equal amounts of CEACAM1-L and CEACAM1-S (Figure S3E). Collectively, these data provided evidence that high expression of CEACAM1, and in particular enrichment of CEACAM1-S, was a defining feature of certain subsets of CD4<sup>+</sup> T cells under physiological conditions that serve a regulatory or accessory role in secretory immunity and preferentially localize to organized lymphoid structures and/or intestinal tissues.

### CEACAM1-S Independently Regulates the Expansion and Function of CD4<sup>+</sup> T Cells in Which It Is Enriched

Our observations of preferential CEACAM1 expression on CD4<sup>+</sup>CD25<sup>-</sup>LAP<sup>+</sup> and Tfh cells from WT mice led us to question the ability of CEACAM1 to regulate these cells and, further, to interrogate the relative contribution of CEACAM1-L and CEACAM1-S isoforms in this process. Utilizing the CEACAM1 transgenic mice, we first examined the frequency of CD4<sup>+</sup>CD25<sup>-</sup>LAP<sup>+</sup> T cells in mucosal tissues under conditions of forced overexpression of the CEACAM1-4L or CEACAM1-4S isoforms. These data demonstrated a significant increase in the percentage of CD4<sup>+</sup>CD25<sup>-</sup>LAP<sup>+</sup> T cells in the MLN from 4S Tg mice relative to WT controls (Figures 6A and 6B) and in *Ceacam1*<sup>-/-</sup>-4S Tg mice compared to *Ceacam1*<sup>-/-</sup> controls (Figures 6C and 6D). This increase in CD4<sup>+</sup>CD25<sup>-</sup>LAP<sup>+</sup> cells was specifically detected under conditions of overexpression of the CEACAM1-4S isoform in both WT and *Ceacam1*<sup>-/-</sup> animals (Figures 6A and 6C) and was notably absent in CEACAM1-4L transgenic mice in which the inhibitory CEACAM1 isoform was overexpressed (Figures 6B and 6D). Given the detected increases in cell death in both CD4<sup>+</sup>LAP<sup>-</sup> and CD4<sup>+</sup>LAP<sup>+</sup> populations in 4S Tg animals (Figure S4A), our finding of an expanded population of viable CD4<sup>+</sup>LAP<sup>+</sup> T cells under conditions of CEACAM1S overexpression can best be explained not by decreased AICD among this population but rather by increased generation of the CD4<sup>+</sup>LAP<sup>+</sup> T cells in the presence of forced CEACAM1-4S expression. In stark contrast, our analysis did not reveal any differences in the frequency of CD4<sup>+</sup>CD25<sup>+</sup>Foxp3<sup>+</sup> T cells upon forced expression of CEACAM1-4S in T cells relative to that observed in WT mice (data not shown). In order to ascertain whether enrichment of activating CEACAM1-S was functionally relevant to CD4<sup>+</sup>CD25<sup>-</sup>LAP<sup>+</sup> T cells, we examined the in vitro suppressive function of CD4<sup>+</sup>LAP<sup>+</sup> T regulatory cells obtained from the MLN of 4S Tg mice. We found that these cells possessed enhanced regulatory activity when compared to CD4<sup>+</sup>CD25<sup>-</sup>LAP<sup>+</sup> T cells from WT controls (Figure 6E). In contrast, no differences were observed in the regulatory potential between 4S Tg and WT CD4<sup>+</sup>CD25<sup>+</sup> Treg cells obtained from the MLN in similar assays (Figure 6E). Taken together, these studies indicated that the relative increase of CEACAM1-4S, in the absence of any contribution from the inhibitory CEACAM1-L isoforms, specifically enhanced both the development and functional capacity of regulatory CD4<sup>+</sup>CD25<sup>-</sup>LAP<sup>+</sup> T cells.

It is known that CD4<sup>+</sup>CD25<sup>-</sup>LAP<sup>+</sup> T cells accumulate in intestinal tissues under steady-state and inflammatory conditions and that orally administered CD3-specific antibodies induce CD4<sup>+</sup>CD25<sup>-</sup>LAP<sup>+</sup> regulatory T cells in MLN (Boirivant et al., 2008; Ochi et al., 2006). We thus made use of this approach in order to determine whether CEACAM1 is specifically involved in the induction phase of CD4<sup>+</sup>CD25<sup>-</sup>LAP<sup>+</sup> T cell development under conditions of physiological CEACAM1 expression. Although no significant differences were identified in the proportions of CD4<sup>+</sup>CD25<sup>+</sup>LAP<sup>+</sup> Treg cells in spleen, MLN, PP, or blood of untreated or isotype-treated *Ceacam1*<sup>-/-</sup> and WT mice, oral administration of anti-CD3 antibody substantially increased the percentage of CD4<sup>+</sup>CD25<sup>-</sup>LAP<sup>+</sup> T cells in the MLN of WT but not *Ceacam1*<sup>-/-</sup> mice (Figure 6F; data not shown). In contrast, oral administration of a CD3-specific antibody was not observed to alter the percentage of CD4<sup>+</sup>Foxp3<sup>+</sup> T regulatory cells in the

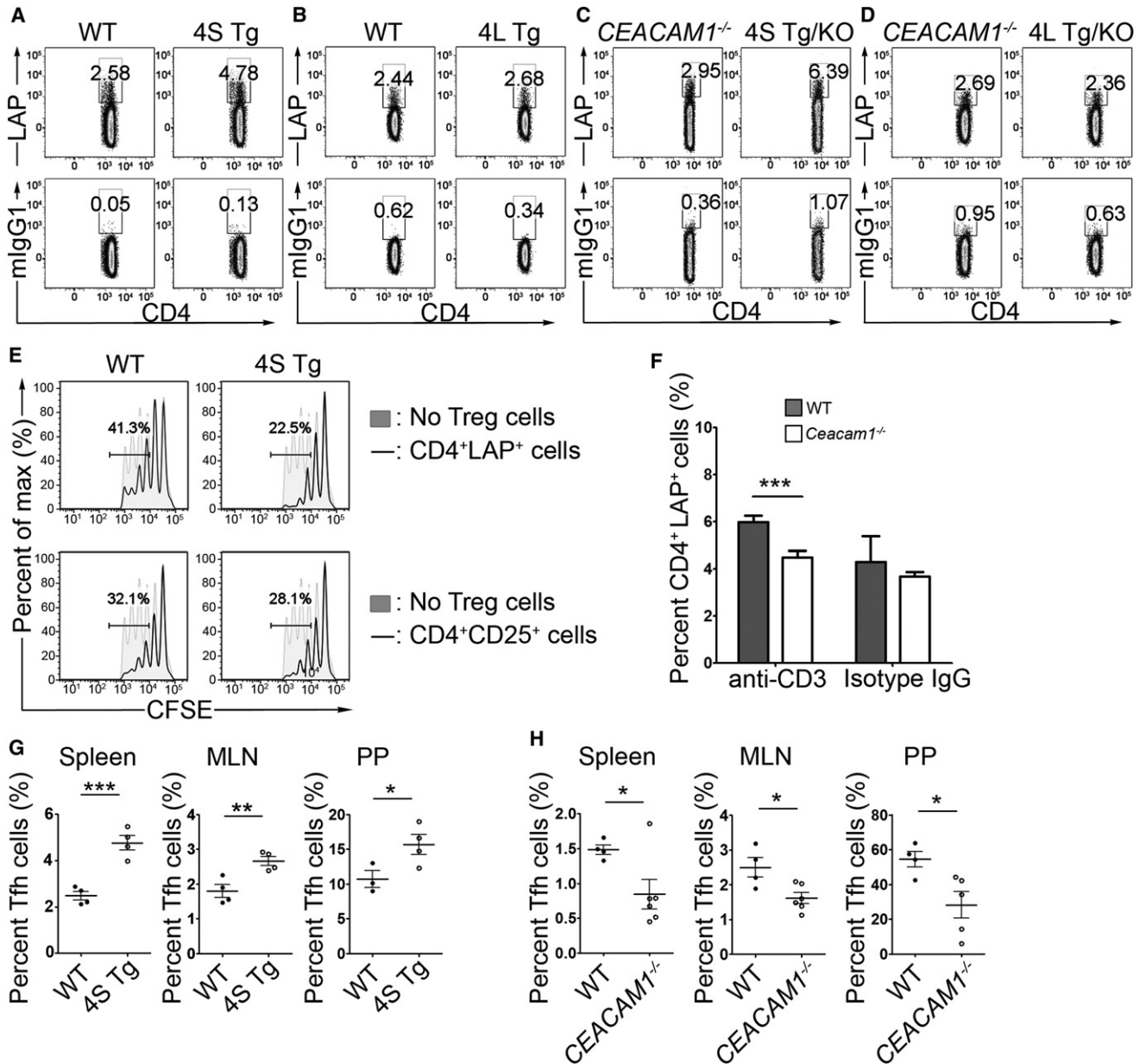
MLN of WT or *Ceacam1*<sup>-/-</sup> mice (Figure S4B). These studies confirmed a physiological role played by CEACAM1 in regulating the expansion of CD4<sup>+</sup>CD25<sup>-</sup>LAP<sup>+</sup> T cells in mucosal tissues as well as in promoting their suppressive function.

Given our observation of PP enlargement in 4S Tg mice and the preferential expression of CEACAM1-S in Tfh cells in WT mice, we next examined the impact of highly abundant CEACAM1-4S on the frequency of Tfh cells in the spleen, MLN and PP of 4S Tg mice. Flow cytometric analysis of each of these tissues revealed an enrichment not only of PD-1 itself (Figure S4C) but also of the PD-1<sup>+</sup>CXCR5<sup>+</sup> population of Tfh cells in the 4S Tg mice compared to their WT littermate controls (Figure 6G). Importantly, CEACAM1-4S-mediated enrichment of Tfh cells occurred completely independently of the CEACAM1-4L isoform since *Ceacam1*<sup>-/-</sup>-4S Tg mice also contained much higher amounts of Tfh cells than their *Ceacam1*<sup>-/-</sup> counterparts (Figure 6H). Collectively, our data are consistent with a role for CEACAM1-S isoforms in promoting the development of two types of accessory cells (CD4<sup>+</sup>CD25<sup>-</sup>LAP<sup>+</sup> T cells and Tfh cells), which are not only enriched in organized lymphoid structures and mucosal tissues but are also known to be involved in B cell activation (Cerutti, 2008; Good-Jacobson et al., 2010), and likely thus contribute to the ability of CEACAM1 to regulate secretory intestinal immunity.

### DISCUSSION

Here, we provide evidence for tissue and cell-type specific regulation of CEACAM1 splicing in T cells which results in the unique predominance of CEACAM1-S isoforms in intestinal resident T cells and specific subsets of T cells associated with humoral immunity. Although CEACAM1 is an activation-induced molecule on T cells, the observed tissue-specific splicing was not due to activation of the T cells per se because it was not observed when T cells were stimulated ex vivo. Adoptive transfer experiments demonstrated that CEACAM1-S dominance was gained by naive peripheral T cells upon entry into the intestines and was lost when mucosal T cells were removed from the intestines and restimulated ex vivo. This indicated that the specific mucosal milieu of the intestines promotes CEACAM1-S expression in T cells. Moreover, our results in 4S Tg mice indicated that CEACAM1-S facilitates T cell activation and the induction of secretory IgA immunity. Consistent with this, T cell subsets that bore a memory phenotype characteristic of mucosal tissues (Gibbons and Spencer, 2011) and specific subsets of T cells such as CD4<sup>+</sup>CD25<sup>-</sup>LAP<sup>+</sup> and Tfh cells, which encourage secretory immunity, displayed an enrichment upon CEACAM1-S expression and were driven by its presence. Thus, CEACAM1-S expression is promoted and maintained by the mucosal environment and facilitates T cell activation linked to the generation of cell types responsible for mucosal regulation and protection.

The mucosal factors responsible for this preferential splicing within the mucosal microenvironment of the intestines are unknown. We showed that the differential splicing of CEACAM1 occurred independently of microbial factors, as observed in GF mice, and related signaling pathways such as MYD88 and NOD2. This suggests that microbial-independent tissue-specific factors and their own related pathways regulate CEACAM1



**Figure 6. CEACAM1-S Directly Enhances the Generation of CD4<sup>+</sup>LAP<sup>+</sup> and Tfh Cells**

(A–D) The percentage of CD4<sup>+</sup>LAP<sup>+</sup> cells is increased in MLN of naive 4S Tg mice (A) but not 4L Tg mice (B). *Ceacam1*<sup>-/-</sup>-4S Tg mice (C) but not *Ceacam1*<sup>-/-</sup>-4L Tg mice (D) are enriched in CD4<sup>+</sup>LAP<sup>+</sup> T cells compared to their littermate controls.

(E) Overexpression of CEACAM1-4S enhances the regulatory function of CD4<sup>+</sup>LAP<sup>+</sup> Treg cells in vitro as shown by the decrease in proliferation of responder T cells when cocultured with CD4<sup>+</sup>LAP<sup>+</sup> Treg cells from pooled spleen and LN of 4S Tg mice.

(F) Oral feeding of anti-CD3 antibody significantly increases the percentage of CD4<sup>+</sup>LAP<sup>+</sup> Treg cells in the MLN of WT but not *Ceacam1*<sup>-/-</sup> mice. Mice were fed 5 μg anti-CD3 (or isotype control) for each of 5 consecutive days and CD4<sup>+</sup>LAP<sup>+</sup> T cell frequency was assessed at day 7.

(G and H) The percentage of CD4<sup>+</sup>PD1<sup>+</sup>CXCR5<sup>+</sup> Tfh cells in the spleen, MLN, and PP is increased 4S Tg mice (G) and decreased in *Ceacam1*<sup>-/-</sup> mice (H) when compared to their littermate controls. All data are representative of 3 independent experiments with n = 3–6 mice per group. All data are mean ± SEM, \*p < 0.05; \*\*p < 0.01, \*\*\*p < 0.005 (two-tailed Student's t test).

splicing and expression in the intestines. Whether these factors include soluble (e.g., cytokines) or cell surface molecules unique to the mucosal tissues, it is clear that they regulate both the extent of CEACAM1 expression and the splicing of its mRNA. These studies also demonstrated that tissue- and cell-specific

regulation of *Ceacam1* alternative splicing occurs in vivo and is linked to specific immune functions.

Importantly, these studies also showed that CEACAM1-S is not a minor isoform in primary T cells as is currently thought (Gray-Owen and Blumberg, 2006). In transgenic mice with

conditional expression of CEACAM1 in T cells, we found that CEACAM1-S provided unique costimulatory signals that promoted both AICD and an effector memory phenotype, whereas CEACAM1-L was coinhibitory for TCR-CD3 complex signaling (Nagaishi et al., 2006). Moreover, we have now shown that CEACAM1-S in T cells can elicit this stimulation as an independent signaling unit without CEACAM1-L assistance in vivo. Through these properties, CEACAM1-S regulates specific subsets of T cells. These cell populations include CD4<sup>+</sup>LAP<sup>+</sup> T cells and Tfh cells that are an integral component of mucosal tissues and organized lymphoid structures, respectively, and are known to regulate secretory immunity (Linterman et al., 2011). In view of CEACAM1-S enrichment in these latter cell types irrespective of their localization to peripheral or mucosal tissues as well as with our observations that the intestinal tissues facilitate CEACAM1-S expression, our studies also raise the possibility that CD4<sup>+</sup>LAP<sup>+</sup> T cells and Tfh cells may be born in and/or modified remotely by mucosal factors.

Although little is known about CEACAM1-S signaling in T cells, in epithelial cells it is known to associate with the cytoskeleton (actin and tropomyosin), calmodulin, and annexin II (Edlund et al., 1996; Kirshner et al., 2003; Schumann et al., 2001). Such intracellular associations, interestingly, are linked to the promotion of apoptosis of mammary epithelial cells during acini morphogenesis (Kirshner et al., 2003). In addition, consistent with previous transfection studies in Jurkat T cells, CEACAM1-S signaling is able to activate NFAT in vivo (Chen et al., 2004b). As shown here, this was associated with the upregulation of NFAT-dependent soluble and cell surface molecules such as PD-1 and CD40L. Thus, the current studies not only demonstrate the importance of CEACAM1-S in T cells under physiological conditions but also their role in delivering independent signals that may oppose those provided by CEACAM1-L isoforms. Such observations further highlight the functional similarities between CEACAM1 and other signaling pathways that comprise highly related activating and inhibiting modules such as CD28 and CTLA-4 (Greenwald et al., 2005).

Presumably through its NFAT-related activation functions, CEACAM1-S-mediated T cell activation of B cells in the PP promoted the generation of IgA plasma blasts, the expansion of PP size and IgA secretion into the lumen. Given the decreased IgA secretion observed in the absence of CEACAM1 expression and increased IgA secretion when CEACAM1-4S was overexpressed on T cells, CEACAM1-S in T cells emerges as an important factor in directly regulating B cell function and PP structure. PP are the essential inductive sites for regulation of antigen-specific IgA antibody responses following oral immunization, although a PP-independent pathway for mucosal IgA responses also likely exists (Macpherson and Slack, 2007; Cerutti, 2008; Hashizume et al., 2008). Previous studies show that selective TGF- $\beta$  receptor type II deficiency in B cells results in loss of IgA-expressing cells in the spleen and PP (Borsutzky et al., 2004; Cazac and Roes, 2000). Consistent with this, CD4<sup>+</sup>CD25<sup>+</sup> Tregs have been identified as major helper cells for IgA responses to microbial antigens such as flagellin, presumably through their secretion of TGF- $\beta$  (Cong et al., 2009). Because CD4<sup>+</sup>CD25<sup>-</sup>LAP<sup>+</sup> T regulatory cells are also TGF- $\beta$ -dependent (Ochi et al., 2006; Oida et al., 2003), were increased in the mucosal tissues of mice that overexpress CEA-

CAM1-4S, and inadequately expanded by T cell receptor-dependent signals in the absence of CEACAM1 expression, a plausible mechanistic explanation for the increased IgA production and TGF- $\beta$  secretion observed in 4S Tg mice is that CD4<sup>+</sup>CD25<sup>-</sup>LAP<sup>+</sup> T cells are a responsible factor. Additionally, the increased frequency of PD-1<sup>+</sup>CXCR5<sup>+</sup> Tfh cells that we observed in the spleen, MLN, and PP of 4S Tg mice is likely to provide additional stimulation to IgA-producing plasma blasts because CXCR5<sup>+</sup> Tfh cells in B cell zones of lymphoid tissues possess significant capacity for supporting IgG and IgA production by B cells (Fazilleau et al., 2009a). The ability of Tfh cells to regulate antigen-specific B cell immunity in vivo is likely linked to its high expression of PD-1, which is NFAT-dependent (Oestreich et al., 2008) and is known to deliver signals that promote long-lived plasma cell responses (Good-Jacobson et al., 2010). Thus, our studies showed that CEACAM1-S regulates secretory IgA within PP via its ability to elicit NFAT-mediated signaling that enhances the expression of cell surface molecules such as CD40L and PD-1, the expansion of CD4<sup>+</sup>CD25<sup>-</sup>LAP<sup>+</sup> T cells and Tfh cells, and the secretion of TGF- $\beta$ , IL-2, IL-4, and IL-10 by CD4<sup>+</sup> T cells, all factors that promote secretory IgA immunity (Cazac and Roes, 2000; Cerutti, 2008; Good-Jacobson et al., 2010; Massacand et al., 2008). As a consequence, in the absence of CEACAM1, secretory IgA is reduced.

The ability of CEACAM1 to regulate secretory IgA production is also interesting given the well-known role of CEACAM1 as a microbial receptor (Gray-Owen and Blumberg, 2006). Moreover, bacteria are well-known inducers of secretory IgA production (Macpherson and Slack, 2007) and IgA in turn regulates the composition of the commensal microbiota (Fagarasan, 2008). For example, IgA concentrations are very low in GF animals with normalization of these amounts within a few weeks following intestinal bacterial colonization after birth (Hapfelmeier et al., 2010). IgA-deficiency is also associated with a bloom in certain organisms in the intestinal lumen (Suzuki et al., 2004). Furthermore, secretory IgA promotes both immune exclusion and neutralization of translocated bacteria, which preserves intestinal barrier integrity by preventing bacterial-induced inflammation (Boullier et al., 2009). In addition, IgA can promote bacterial colonization as shown for *Helicobacter* sp., which bind to the gastric epithelium via IgA but do not invade (Taylor et al., 2007). As such, IgA can contribute to the survival of certain classes of bacteria within the intestines. The latter is also consistent with the ability of secreted IgA to bind to luminal bacteria (van der Waaij et al., 1996) and in some cases inhibit their invasiveness, as observed during *Salmonella typhimurium* infection (Wijburg et al., 2006). Consistent with this, we observed that CEACAM1 gain-of-function in T cells and loss-of-function correlated with the ability of the host to resist the pathogenicity of *L. monocytogenes* infection. *Ceacam1*<sup>-/-</sup> and 4S Tg mice also demonstrated increased community diversity of the commensal ileal microbiota, with a predominance of *Lactobacillus* and *Streptococcus* species as compared to WT controls. This indicated that CEACAM1-S dependent effector functions of these T cells have the capacity to modulate the composition of microbial communities in the small intestine, presumably through their effects on IgA secretion. These observations not only further support a role for CEACAM1 in the generation of

secretory immunity but show that it is physiologically important to the regulation and control of the intestinal microbiota and enteropathogens.

In summary, our studies have shown that in tissue resident T cells of the intestines as well as in specific subsets of T cells, not only are CEACAM1-S isoforms expressed but they often dominate over CEACAM1-L isoforms. In these cells, CEACAM1-S provides unique signals that promote populations of T cells regulating IgA production and secretion associated with control of the commensal microbiota and resistance to enteropathogens. These studies demonstrate the important role played by CEACAM1-S isoforms in immunity.

## EXPERIMENTAL PROCEDURES

### Animals

WT C57BL/6 (B6) mice were purchased from The Jackson Laboratory. hCD2 promoter controlled CEACAM1-4S transgenic mice were generated in the Brigham and Women's Hospital Transgenic Core Facility by a similar strategy to that previously described (Nagaishi et al., 2006). *Ceacam1*<sup>-/-</sup> mice were previously described (Leung et al., 2006). *Myd88*<sup>-/-</sup> mice and *Nod2*<sup>-/-</sup> mice were kindly provided by Dr. S. Akira (Osaka, Japan) and Dr. K.S. Kobayashi (Dana-Farber Cancer Institute, Boston, MA), respectively. Swiss Webster germ-free (SWGf) mice and C57BL/6 germ-free mice (B6Gf) were maintained in germ-free isolators at Taconic. All other mice were maintained under specific pathogen-free conditions at the Harvard Center for Comparative Medicine at Harvard Medical School. All mice were used between 8 and 12 weeks of age. All animal experimentation was performed in accordance with the Institutional Animal Care and Use Committee (IACUC) of Harvard Medical School, which granted permission for this study.

### Flow Cytometry

For CEACAM1 expression assays, cells were incubated with the CC1 antibody for 20 min followed by FITC-conjugated rat anti-mouse IgG1. For other cell surface proteins, cells were stained with the indicated fluorescence-conjugated antibodies for 20 min, washed, and resuspended with 1% BSA/PBS FACS staining buffer containing DAPI (Invitrogen). Cell apoptosis assays were performed according to the Annexin V-FITC Apoptosis Detection Kit manual (BD Bioscience). For intracellular cytokine staining, cells were stimulated with ionomycin (Sigma, 2 μg/ml), PMA (Sigma, 30 ng/ml), and Golgistop (BD Bioscience) for 4 hr followed by intracellular cytokine staining using Cytofix/Cytoperm solution kit according to the manufacturer's instructions (BD Bioscience). IgA staining was performed according to the instructions provided with the rat anti-mouse IgA antibody (C10-3). CD4<sup>+</sup>LAP<sup>+</sup> T cells were stained for 20 min with biotinylated anti-LAP antibody (R&D Systems) followed by APC-conjugated streptavidin (BD Biosciences) as described previously (Ochi et al., 2006). Tfh cells were stained for CXCR5 and PD-1 as described previously (Linterman et al., 2011). All stained cells were analyzed on an LSRII (BD Biosciences) or a MACSQuant (Miltenyi Biotech) flow cytometer, and data were analyzed using Flowjo software.

### Culture-Based Studies of Ileal Microbial Community Structure

Samples of terminal ileum (2 cm from the ileocecal valve) were sterilely dissected from mice, placed in cryovials, and immediately snap frozen on liquid nitrogen. Samples were delivered to the Harvard Digestive Disease Center's (HDDC) Microbiome and Gnotobiotics Core facility on dry ice and stored at -80°C until processing. Isolation of microorganisms and determination of microorganisms is described in the Supplemental Experimental Procedures and Table S3.

### Oral *Listeria monocytogenes* Infection

Gender- and age-matched groups of *Ceacam1*<sup>-/-</sup> mice, 4S Tg mice, and WT littermates were housed under BL2 conditions prior to infection. Approximately 5 × 10<sup>8</sup> cfu of a 14 to 16 hr culture of *L. monocytogenes* strain InIA<sup>m</sup> (Wollert et al., 2007) was suspended in 0.2 ml PBS. The suspension was delivered intragastrically to mice with a 21G feeding needle attached to a 1 ml

syringe. Animals were monitored daily and at 72 hr postinfection were sacrificed and dissected for histological analysis, IgA production, and determination of the number of bacteria present in the small intestine, spleen, and liver. CfU assays (small intestine, spleen, and liver cfu/organ) were performed as previously described (Kaser et al., 2008).

### Oral Feeding of anti-CD3

Mice were fed with anti-CD3 antibody using a protocol described previously (Ochi et al., 2006). Specifically, groups of paired mice were fed anti-CD3 or IgG isotype control antibody at a dose of 5 μg/mouse/day for 5 days. After one day's rest, mice were sacrificed at day 7 and the percentage of CD4<sup>+</sup>LAP<sup>+</sup> regulatory T cells was determined in specific lymphoid tissues.

### Suppression Assays

Regulatory T cell suppression assays were performed as previously described (Fantini et al., 2007). Briefly, 1 × 10<sup>5</sup> freshly isolated splenic CD4<sup>+</sup>CD25<sup>-</sup> T cells were stained with CFSE and mixed with an equal number of either CD4<sup>+</sup>CD25<sup>+</sup> or CD4<sup>+</sup>LAP<sup>+</sup> T regulatory cells isolated via magnetic sorting (Miltenyi). T cell mixtures were then activated in the presence of soluble anti-CD3 (1 μg/ml) and 4 × 10<sup>5</sup> irradiated total splenocytes as antigen presenters. After 4 days of culture, CFSE dilution of the responder CD4<sup>+</sup>CD25<sup>-</sup> T cells was measured as an indication of proliferation.

### Total Serum and Secretion Immunoglobulin ELISA

The sera, intestinal washes, or fecal extracts were collected for ELISA as previously described (Hapfelmeier et al., 2010).

### Immunohistochemical Analysis

PP were isolated and embedded in OCT compound (Sakura Finetechnical) and snap frozen in dry ice. Frozen sections were prepared on micro slides using a cryostat (Leica), and stored at -70°C until use. The slides were fixed in 100% acetone for 5 min at 4°C and air-dried at room temperature. Cryostat sections were blocked with 10% normal goat serum for 1 hr at room temperature (RT). For B220 and IgA staining, the slides were stained with purified rat anti-mouse IgA antibody for 1 hr at RT, followed by incubation with Alexa Fluor 568 conjugated goat anti-rat IgG secondary antibody (Invitrogen) and FITC-conjugated anti-mouse B220 antibody (BD Bioscience) for 1 hr at RT. For NFAT staining, the slides were stained with biotin conjugated anti-mouse CD4 antibody and rabbit anti-NFAT1 antibodies for 2 hr at RT, followed by incubation with rhodamine red-X-streptavidin (Jackson ImmunoResearch) and Alexa Fluor® 488 F(ab')<sub>2</sub> fragment of goat anti-rabbit IgG (H+L) (Invitrogen) for 1 hr at RT. The counterstaining was performed using DAPI (Invitrogen). The specimens were analyzed using a Nikon Eclipse Ti microscope.

### Statistics

The Mann-Whitney U-test (two-tailed) was used to assess differences in log<sub>10</sub> cfu in quantitative culture assays. The t test (two-tailed) was used to assess differences between means for other data analyzed. Tests with a p value less than 0.05 were considered statistically significant. Data are presented as mean ± SD or ± SEM, as indicated in the figure legend. Microbial diversity was assessed using two common ecological measures of diversity, Shannon information entropy (Shannon, 1997) and Simpson's diversity index (Baumgart et al., 2007). Both measures take into account the abundances of species relative to one another in a sample.

## SUPPLEMENTAL INFORMATION

Supplemental Information includes four figures, three tables, and Supplemental Experimental Procedures and can be found with this article online at <http://dx.doi.org/10.1016/j.immuni.2012.07.016>.

## ACKNOWLEDGMENTS

We thank R. Maas (Division of Genetics, Brigham and Women's Hospital) for microarray data analysis, C.G. Vinuesa (Australian National University), H. Cantor (Dana Farber Cancer Institute), and K. Smith (Addenbrooke's Hospital, University of Cambridge) for guidance on analysis of Tfh cells

and J. Cusick for technical assistance. L.C. and T.N. were supported by Research Fellowship Awards from the Crohn's & Colitis Foundation of America. R.S.B. was supported by National Institutes of Health (NIH) DK051362, DK044319, DK053056, DK088199, Harvard Digestive Diseases Center (NIH P30DK034854), and the High Pointe Foundation. G.G. was supported by the Stanley L. Robbins Memorial Research Award. J.C.A. is supported by NIH T32 DK007737. K.H. was supported by NIH AI059576. K.B. and N.B. were supported by the Canadian Institutes of Health Research. J.E.S. was supported by NIH CA84202. C.J. was supported by NIH DK73338 and DK47700. L.B. was supported by the Harvard Digestive Diseases Center (NIH P30DK034854), HD061916, and the BWH Gnotobiotics and Microbiome Core. T.N. was supported by Japanese Ministry of Education, Culture, Sports, Science and Technology; Nihon Univ. Medical Association; Abbott Japan Research Fund; Foundation for Advancement of International Science; and Takeda Science Foundation.

Received: December 21, 2011

Accepted: July 30, 2012

Published online: November 1, 2012

## REFERENCES

- Abou-Rjaily, G.A., Lee, S.J., May, D., Al-Share, Q.Y., Deangelis, A.M., Ruch, R.J., Neumaier, M., Kalthoff, H., Lin, S.H., and Najjar, S.M. (2004). CEACAM1 modulates epidermal growth factor receptor-mediated cell proliferation. *J. Clin. Invest.* **114**, 944–952.
- Azuz-Lieberman, N., Markel, G., Mizrahi, S., Gazit, R., Hanna, J., Achdout, H., Gruda, R., Katz, G., Arnon, T.I., Battat, S., et al. (2005). The involvement of NK cells in ankylosing spondylitis. *Int. Immunol.* **17**, 837–845.
- Barreau, F., Meinzer, U., Chareyre, F., Berrebi, D., Niwa-Kawakita, M., Dussallant, M., Foligne, B., Ollendorff, V., Heyman, M., Bonacorsi, S., et al. (2007). CARD15/NOD2 is required for Peyer's patches homeostasis in mice. *PLoS ONE* **2**, e523.
- Baumgart, M., Dogan, B., Rishniw, M., Weitzman, G., Bosworth, B., Yantiss, R., Orsi, R.H., Wiedmann, M., McDonough, P., Kim, S.G., et al. (2007). Culture independent analysis of ileal mucosa reveals a selective increase in invasive *Escherichia coli* of novel phylogeny relative to depletion of Clostridiales in Crohn's disease involving the ileum. *ISME J.* **1**, 403–418.
- Bjørnøkket, A., Fausa, O., and Midtvedt, T. (1983). Bacterial overgrowth in jejunal and ileal disease. *Scand. J. Gastroenterol.* **18**, 289–298.
- Boirivant, M., Amendola, A., Butera, A., Sanchez, M., Xu, L., Marinaro, M., Kitani, A., Di Giacinto, C., Strober, W., and Fuss, I.J. (2008). A transient breach in the epithelial barrier leads to regulatory T-cell generation and resistance to experimental colitis. *Gastroenterology* **135**, 1612–1623.
- Borsutzky, S., Cazac, B.B., Roes, J., and Guzmán, C.A. (2004). TGF- $\beta$  receptor signaling is critical for mucosal IgA responses. *J. Immunol.* **173**, 3305–3309.
- Boullier, S., Tanguy, M., Kadaoui, K.A., Caubet, C., Sansonetti, P., Corthésy, B., and Phalipon, A. (2009). Secretory IgA-mediated neutralization of *Shigella flexneri* prevents intestinal tissue destruction by down-regulating inflammatory circuits. *J. Immunol.* **183**, 5879–5885.
- Boulton, I.C., and Gray-Owen, S.D. (2002). Neisserial binding to CEACAM1 arrests the activation and proliferation of CD4+ T lymphocytes. *Nat. Immunol.* **3**, 229–236.
- Cazac, B.B., and Roes, J. (2000). TGF- $\beta$  receptor controls B cell responsiveness and induction of IgA in vivo. *Immunity* **13**, 443–451.
- Gerutti, A. (2008). The regulation of IgA class switching. *Nat. Rev. Immunol.* **8**, 421–434.
- Chen, C.J., and Shively, J.E. (2004a). The cell-cell adhesion molecule carcinoembryonic antigen-related cellular adhesion molecule 1 inhibits IL-2 production and proliferation in human T cells by association with Src homology protein-1 and down-regulates IL-2 receptor. *J. Immunol.* **172**, 3544–3552.
- Chen, T., Zimmermann, W., Parker, J., Chen, I., Maeda, A., and Bolland, S. (2001). Biliary glycoprotein (BGP, CD66a, CEACAM1) mediates inhibitory signals. *J. Leukoc. Biol.* **70**, 335–340.
- Chen, D., Iijima, H., Nagaishi, T., Nakajima, A., Russell, S., Raychowdhury, R., Morales, V., Rudd, C.E., Utku, N., and Blumberg, R.S. (2004b). Carcinoembryonic antigen-related cellular adhesion molecule 1 isoforms alternatively inhibit and costimulate human T cell function. *J. Immunol.* **172**, 3535–3543.
- Chen, Z., Chen, L., Qiao, S.W., Nagaishi, T., and Blumberg, R.S. (2008). Carcinoembryonic antigen-related cell adhesion molecule 1 inhibits proximal TCR signaling by targeting ZAP-70. *J. Immunol.* **180**, 6085–6093.
- Cong, Y., Wang, L., Konrad, A., Schoeb, T., and Elson, C.O. (2009). Curcumin induces the tolerogenic dendritic cell that promotes differentiation of intestine-protective regulatory T cells. *Eur. J. Immunol.* **39**, 3134–3146.
- Coutelier, J.P., Godfraind, C., Dveksler, G.S., Wysocka, M., Cardellicchio, C.B., Noël, H., and Holmes, K.V. (1994). B lymphocyte and macrophage expression of carcinoembryonic antigen-related adhesion molecules that serve as receptors for murine coronavirus. *Eur. J. Immunol.* **24**, 1383–1390.
- Dery, K.J., Gaur, S., Gencheva, M., Yen, Y., Shively, J.E., and Gaur, R.K. (2011). Mechanistic control of carcinoembryonic antigen-related cell adhesion molecule-1 (CEACAM1) splice isoforms by the heterogeneous nuclear ribonuclear proteins hnRNP L, hnRNP A1, and hnRNP M. *J. Biol. Chem.* **286**, 16039–16051.
- Donda, A., Mori, L., Shamshiev, A., Carena, I., Mottet, C., Heim, M.H., Beglinger, C., Grunert, F., Rochlitz, C., Terracciano, L., et al. (2000). Locally inducible CD66a (CEACAM1) as an amplifier of the human intestinal T cell response. *Eur. J. Immunol.* **30**, 2593–2603.
- Dveksler, G.S., Pensiero, M.N., Dieffenbach, C.W., Cardellicchio, C.B., Basile, A.A., Elia, P.E., and Holmes, K.V. (1993). Mouse hepatitis virus strain A59 and blocking antireceptor monoclonal antibody bind to the N-terminal domain of cellular receptor. *Proc. Natl. Acad. Sci. USA* **90**, 1716–1720.
- Edlund, M., Blikstad, I., and Obrink, B. (1996). Calmodulin binds to specific sequences in the cytoplasmic domain of C-CAM and down-regulates C-CAM self-association. *J. Biol. Chem.* **271**, 1393–1399.
- Fagarasan, S. (2008). Evolution, development, mechanism and function of IgA in the gut. *Curr. Opin. Immunol.* **20**, 170–177.
- Fagarasan, S., Kinoshita, K., Muramatsu, M., Ikuta, K., and Honjo, T. (2001). In situ class switching and differentiation to IgA-producing cells in the gut lamina propria. *Nature* **413**, 639–643.
- Fantini, M.C., Dominitzki, S., Rizzo, A., Neurath, M.F., and Becker, C. (2007). In vitro generation of CD4+ CD25+ regulatory cells from murine naive T cells. *Nat. Protoc.* **2**, 1789–1794.
- Fazilleau, N., Mark, L., McHeyzer-Williams, L.J., and McHeyzer-Williams, M.G. (2009a). Follicular helper T cells: lineage and location. *Immunity* **30**, 324–335.
- Gencheva, M., Chen, C.J., Nguyen, T., and Shively, J.E. (2010). Regulation of CEACAM1 transcription in human breast epithelial cells. *BMC Mol. Biol.* **11**, 79.
- Gibbons, D.L., and Spencer, J. (2011). Mouse and human intestinal immunity: same ballpark, different players; different rules, same score. *Mucosal Immunol.* **4**, 148–157.
- Good-Jacobson, K.L., Szumilas, C.G., Chen, L., Sharpe, A.H., Tomayko, M.M., and Shlomchik, M.J. (2010). PD-1 regulates germinal center B cell survival and the formation and affinity of long-lived plasma cells. *Nat. Immunol.* **11**, 535–542.
- Gray-Owen, S.D., and Blumberg, R.S. (2006). CEACAM1: contact-dependent control of immunity. *Nat. Rev. Immunol.* **6**, 433–446.
- Greenwald, R.J., Freeman, G.J., and Sharpe, A.H. (2005). The B7 family revisited. *Annu. Rev. Immunol.* **23**, 515–548.
- Hapfelmeier, S., Lawson, M.A., Slack, E., Kirundi, J.K., Stoel, M., Heikenwalder, M., Cahenzli, J., Velykoredko, Y., Balmer, M.L., Endt, K., et al. (2010). Reversible microbial colonization of germ-free mice reveals the dynamics of IgA immune responses. *Science* **328**, 1705–1709.
- Hashizume, T., Togawa, A., Nochi, T., Igarashi, O., Kweon, M.N., Kiyono, H., and Yamamoto, M. (2008). Peyer's patches are required for intestinal immunoglobulin A responses to *Salmonella* spp. *Infect. Immunol.* **76**, 927–934.
- Hermann-Kleiter, N., and Baier, G. (2010). NFAT pulls the strings during CD4+ T helper cell effector functions. *Blood* **115**, 2989–2997.



- Huber, M., Izzi, L., Grondin, P., Houde, C., Kunath, T., Veillette, A., and Beauchemin, N. (1999). The carboxyl-terminal region of biliary glycoprotein controls its tyrosine phosphorylation and association with protein-tyrosine phosphatases SHP-1 and SHP-2 in epithelial cells. *J. Biol. Chem.* *274*, 335–344.
- Hurst, S.D., Cooper, C.J., Sitterding, S.M., Choi, J., Jump, R.L., Levine, A.D., and Barrett, T.A. (1999). The differentiated state of intestinal lamina propria CD4<sup>+</sup> T cells results in altered cytokine production, activation threshold, and costimulatory requirements. *J. Immunol.* *163*, 5937–5945.
- Iijima, H., Neurath, M.F., Nagaishi, T., Glickman, J.N., Nieuwenhuis, E.E., Nakajima, A., Chen, D., Fuss, I.J., Utku, N., Lewicki, D.N., et al. (2004). Specific regulation of T helper cell 1-mediated murine colitis by CEACAM1. *J. Exp. Med.* *199*, 471–482.
- Kammerer, R., Hahn, S., Singer, B.B., Luo, J.S., and von Kleist, S. (1998). Biliary glycoprotein (CD66a), a cell adhesion molecule of the immunoglobulin superfamily, on human lymphocytes: structure, expression and involvement in T cell activation. *Eur. J. Immunol.* *28*, 3664–3674.
- Kaser, A., Lee, A.H., Franke, A., Glickman, J.N., Zeissig, S., Tilg, H., Nieuwenhuis, E.E., Higgins, D.E., Schreiber, S., Glimcher, L.H., and Blumberg, R.S. (2008). XBP1 links ER stress to intestinal inflammation and confers genetic risk for human inflammatory bowel disease. *Cell* *134*, 743–756.
- Kirshner, J., Schumann, D., and Shively, J.E. (2003). CEACAM1, a cell-cell adhesion molecule, directly associates with annexin II in a three-dimensional model of mammary morphogenesis. *J. Biol. Chem.* *278*, 50338–50345.
- Kuespert, K., Pils, S., and Hauck, C.R. (2006). CEACAMs: their role in physiology and pathophysiology. *Curr. Opin. Cell Biol.* *18*, 565–571.
- Lee, H.S.W., Ostrowski, M.A., and Gray-Owen, S. (2008). CEACAM1 dynamics during *Neisseria gonorrhoeae* suppression of CD4<sup>+</sup> T lymphocyte activation. *J. Immunol.* *180*, 6827–6835.
- Leung, N., Turbide, C., Olson, M., Marcus, V., Jothy, S., and Beauchemin, N. (2006). Deletion of the carcinoembryonic antigen-related cell adhesion molecule 1 (Ceacam1) gene contributes to colon tumor progression in a murine model of carcinogenesis. *Oncogene* *25*, 5527–5536.
- Linterman, M.A., Pierson, W., Lee, S.K., Kallies, A., Kawamoto, S., Rayner, T.F., Srivastava, M., Divekar, D.P., Beaton, L., Hogan, J.J., et al. (2011). Foxp3<sup>+</sup> follicular regulatory T cells control the germinal center response. *Nat. Med.* *17*, 975–982.
- Lobo, E.O., Zhang, Z., and Shively, J.E. (2009). Pivotal advance: CEACAM1 is a negative coreceptor for the B cell receptor and promotes CD19-mediated adhesion of B cells in a PI3K-dependent manner. *J. Leukoc. Biol.* *86*, 205–218.
- Macpherson, A.J., and Slack, E. (2007). The functional interactions of commensal bacteria with intestinal secretory IgA. *Curr. Opin. Gastroenterol.* *23*, 673–678.
- Macpherson, A.J., and Uhr, T. (2004). Induction of protective IgA by intestinal dendritic cells carrying commensal bacteria. *Science* *303*, 1662–1665.
- Macpherson, A.J., Hunziker, L., McCoy, K., and Lamarre, A. (2001). IgA responses in the intestinal mucosa against pathogenic and non-pathogenic microorganisms. *Microbes Infect.* *3*, 1021–1035.
- Manohar, M., Baumann, D.O., Bos, N.A., and Cebra, J.J. (2001). Gut colonization of mice with actA-negative mutant of *Listeria monocytogenes* can stimulate a humoral mucosal immune response. *Infect. Immun.* *69*, 3542–3549.
- Massacand, J.C., Kaiser, P., Ernst, B., Tardivel, A., Bürki, K., Schneider, P., and Harris, N.L. (2008). Intestinal bacteria condition dendritic cells to promote IgA production. *PLoS ONE* *3*, e2588.
- Morales, V.M., Christ, A., Watt, S.M., Kim, H.S., Johnson, K.W., Utku, N., Texeira, A.M., Mizoguchi, A., Mizoguchi, E., Russell, G.J., et al. (1999). Regulation of human intestinal intraepithelial lymphocyte cytolytic function by biliary glycoprotein (CD66a). *J. Immunol.* *163*, 1363–1370.
- Nagaishi, T., Pao, L., Lin, S.H., Iijima, H., Kaser, A., Qiao, S.W., Chen, Z., Glickman, J., Najjar, S.M., Nakajima, A., et al. (2006). SHP1 phosphatase-independent T cell inhibition by CEACAM1 adhesion molecule isoforms. *Immunity* *25*, 769–781.
- Nakajima, A., Iijima, H., Neurath, M.F., Nagaishi, T., Nieuwenhuis, E.E., Raychowdhury, R., Glickman, J., Blau, D.M., Russell, S., Holmes, K.V., and Blumberg, R.S. (2002). Activation-induced expression of carcinoembryonic antigen-cell adhesion molecule 1 regulates mouse T lymphocyte function. *J. Immunol.* *168*, 1028–1035.
- Niemir, Z.I., Stein, H., Noronha, I.L., Krüger, C., Andrassy, K., Ritz, E., and Waldherr, R. (1995). PDGF and TGF-beta contribute to the natural course of human IgA glomerulonephritis. *Kidney Int.* *48*, 1530–1541.
- Ochi, H., Abraham, M., Ishikawa, H., Frenkel, D., Yang, K., Basso, A.S., Wu, H., Chen, M.L., Gandhi, R., Miller, A., et al. (2006). Oral CD3-specific antibody suppresses autoimmune encephalomyelitis by inducing CD4<sup>+</sup> CD25<sup>+</sup> LAP<sup>+</sup> T cells. *Nat. Med.* *12*, 627–635.
- Oestreich, K.J., Yoon, H., Ahmed, R., and Boss, J.M. (2008). NFATc1 regulates PD-1 expression upon T cell activation. *J. Immunol.* *181*, 4832–4839.
- Oida, T., Zhang, X., Goto, M., Hachimura, S., Totsuka, M., Kaminogawa, S., and Weiner, H.L. (2003). CD4<sup>+</sup>CD25<sup>+</sup> T cells that express latency-associated peptide on the surface suppress CD4<sup>+</sup>CD45RB<sup>high</sup>-induced colitis by a TGF-beta-dependent mechanism. *J. Immunol.* *170*, 2516–2522.
- Pan, H., and Shively, J.E. (2010). Carcinoembryonic antigen-related cell adhesion molecule-1 regulates granulopoiesis by inhibition of granulocyte colony-stimulating factor receptor. *Immunity* *33*, 620–631.
- Schumann, D., Chen, C.J., Kaplan, B., and Shively, J.E. (2001). Carcinoembryonic antigen cell adhesion molecule 1 directly associates with cytoskeleton proteins actin and tropomyosin. *J. Biol. Chem.* *276*, 47421–47433.
- Seder, R.A., and Ahmed, R. (2003). Similarities and differences in CD4<sup>+</sup> and CD8<sup>+</sup> effector and memory T cell generation. *Nat. Immunol.* *4*, 835–842.
- Shannon, C.E. (1997). The mathematical theory of communication. *1963. MD Comput.* *14*, 306–317.
- Singer, B.B., Scheffrahn, I., Heymann, R., Sigmundsson, K., Kammerer, R., and Obrink, B. (2002). Carcinoembryonic antigen-related cell adhesion molecule 1 expression and signaling in human, mouse, and rat leukocytes: evidence for replacement of the short cytoplasmic domain isoform by glycosylphosphatidylinositol-linked proteins in human leukocytes. *J. Immunol.* *168*, 5139–5146.
- Suzuki, K., Meek, B., Doi, Y., Muramatsu, M., Chiba, T., Honjo, T., and Fagarasan, S. (2004). Aberrant expansion of segmented filamentous bacteria in IgA-deficient gut. *Proc. Natl. Acad. Sci. USA* *101*, 1981–1986.
- Taylor, J.M., Ziman, M.E., Fong, J., Solnick, J.V., and Vajdy, M. (2007). Possible correlates of long-term protection against *Helicobacter pylori* following systemic or combinations of mucosal and systemic immunizations. *Infect. Immun.* *75*, 3462–3469.
- van der Waaij, L.A., Limburg, P.C., Mesander, G., and van der Waaij, D. (1996). In vivo IgA coating of anaerobic bacteria in human faeces. *Gut* *38*, 348–354.
- Wijburg, O.L., Uren, T.K., Simpfendorfer, K., Johansen, F.E., Brandtzaeg, P., and Strugnell, R.A. (2006). Innate secretory antibodies protect against natural *Salmonella typhimurium* infection. *J. Exp. Med.* *203*, 21–26.
- Wollert, T., Pasche, B., Rochon, M., Deppenmeier, S., van den Heuvel, J., Gruber, A.D., Heinz, D.W., Lengeling, A., and Schubert, W.D. (2007). Extending the host range of *Listeria monocytogenes* by rational protein design. *Cell* *129*, 891–902.